





The Letcombe Register



Issue 203

July 2022

VILLAGE DIARY

Mon	Tue	Wed	Thu	Fri	Sat	Sun
				1	2 <u>Tennis Cardio</u> 9 - 10am Junior Tennis Coaching 10 - 2 Cricket 1pm	3 Cricket 1.30pm
				<u>Pizza at the Pavilion</u> 5.00 - 8.30 pm		
4  Evensong 3pm <u>Voices of the Vale</u> 7-9 pm Village Hall	5 <u>Yoga w Beth</u> 0945-1045 Village Hall (<u>please book</u>)	6 Cricket 6pm <u>Book Buffs</u> 7.30pm Greyhound Inn	7 <u>Pilates Rachel</u> 9.30 am Village Hall <u>Yoga w Diana</u> 11.15-12.30 Village Hall Junior Tennis 5-7pm	8	9 <u>Tennis Cardio</u> 9 - 10am Junior Tennis Coaching 10 - 2 Cricket 1pm	10 <u>Holy Communion</u> 10am St Andrew's
11  Evensong 3pm <u>WI</u> 7.00 pm Garden meeting	12 <u>Yoga w Beth</u> 0945-1045 Village Hall (<u>please book</u>)	13 <u>RG&VH Trust Meeting</u> 7.30pm Sports Pavilion Overnight Roadworks See pages 10 & 11	14 <u>Pilates Rachel</u> 9.30 am Village Hall <u>Yoga w Diana</u> 11.15-12.30 Village Hall Junior Tennis 5-7pm	15	16 <u>Tennis Cardio</u> 9 - 10am Junior Tennis Coaching 10 - 2 <u>Nature Reserve</u> Work Party 1.30-4.30pm	17
18  Evensong 3pm <u>Parish Council Meeting</u> - 8pm Village Hall	19	20	21 <u>Pilates Rachel</u> 9.30 am Village Hall <u>Yoga w Diana</u> 11.15-12.30 Village Hall Junior Tennis 5-7pm	22	23 <u>Tennis Cardio</u> 9 - 10am Junior Tennis Coaching 10 - 2 Cricket 1pm	24 <u>Morning Prayer</u> 10am St Andrew's
25  Evensong 3pm	26	27	28 <u>Yoga w Diana</u> 11.15-12.30 Junior Tennis 5-7pm	29	30 <u>Tennis Cardio</u> 9 - 10am Junior Tennis Coaching 10 - 2 Cricket 1pm	31 Cricket 2pm

* Events in the Diary depend on organisers keeping me up to date. They may require booking and are underlined if a link is available for email addresses or websites

In this issue:

DIARY AND CONTENTS	1	TTRO - STARTS 11/7/22 5 NIGHTS - 10PM - 5 AM PAGE 1	9
PARISH COUNCIL / BOOK BUFFS	2	TTRO - STARTS 11/7/22 5 NIGHTS - 10PM - 5 AM PAGE 2	10
PROBATE & WILLS/HEDGEWORKS/HOME MAINTENANCE/LADDERADS	3	FILM CLUB / ST ANDREW'S	11
200 CLUB/WINDOWS/ARBORIST/OVENU/BEAUTY/SKIP HIRE/CLEANING	4	CONSERVATION GROUP	12
WARBOROUGH FARM / GARDENING CLUB TOPICAL TIPS	5	LETCOMBE NATURE RESERVE	13
RG&VH / RG&VH AGM MINUTES	6	LETCOMBE S&SC /PIZZA@PAVILION/BROADBAND UPDATE	14
RG&VH CLUB REPORTS	7	PLATINUM JUBILEE CELEBRATION PHOTO MONTAGE	15
CLUB REPORTS (CONT.) AND AGM MINUTES (CONT.)	8	WASTE CALENDAR / VILLAGE CONTACTS	16



Message from the Parish Council

Firstly on behalf of the Parish Council I must say a huge thank you to all those who contributed to a very successful and enjoyable Jubilee Cream Tea held in the Village Hall. A huge army of helpers, bakers, flower arrangers, tea makers, musicians and others worked to make this community event such a memorable occasion. A good time was had by all, not least the 190 villagers who attended. You will find a montage of photographs taken on the day elsewhere in this Register.

Many of you will have noticed the sudden growth of weeds in and around the PC Burial Ground and this has been exacerbated by the illness of our usual contractor. We are sorry that this has occurred but work will commence this week to bring the whole area back to its usual standard.

The issue of parking continues within the village. In the main most vehicles are parked with thought and consideration given, however there are some occasions when they are not. Please try to be careful when parking close to junctions, and on pathways ensure there is ample space for pedestrians with pushchairs or those with a disability to be able to pass. If you find this to be a persistent issue then please contact the Police on Tel 101.

The Parish Council has no power to intervene, and can simply just try to encourage respect for all road and pavement users.

There are a number of consultations underway currently and rather than wait for this monthly publication we will be sending the information to you via the village email. If you are not already signed up to this please contact the Parish Clerk and please be assured your details will never be shared with a third party. We are keen to encourage involvement in the areas that may affect you and this community so please do respond directly. The Parish Council will also respond but your own personal opinion is always worth expressing.

The Millennium Green is looking spectacular with many native flowers in bloom and well worth a visit, as are the many other natural areas of the village including the nature reserve and the churchyard.

Our next Parish Council Meeting will be held on Monday 18th July, 8pm at the Village Hall. You are all welcome to attend, and if you have any concerns or comments please contact the Parish Clerk letregispc@gmail.com and we will do our best to resolve where we can.

Finally as the good weather continues we hope you will have the chance to relax and enjoy the summer.

Cllr Jeanne Lapsley
Chairman, Letcombe Regis PC

Book Buffs



The next meeting will be in the Greyhound at 8pm on Wednesday 6th July. We shall be reviewing *'The Bookseller of Kabul'* by Asne Seierstad and *'My Name is Leon'* by Kit de Waal.

The new library book is *'Outline'* by Rachel Cusk and the alternative is *'The Man who Died Twice'* by Richard Osman.



Abingdon Wills & Probate

Part of Bicester Wills Ltd

- Standard Single Will - £225
- Standard Mirror Wills - £325
 - Bloodline Wills - £625
- Lasting Power of Attorney
Property & Financial Affairs - £325
- Lasting Power of Attorney
Health & Welfare - £325
- Both Lasting Powers of Attorney - £500
- Probate Assistance from - £1,500
- Pre-paid Funerals Plans - from £1,700

Max and the Team
offer a friendly
estate planning service



max@abingdonwillsandprobate.co.uk 01235 429483
www.abingdonwillsandprobate.co.uk

Trotter Hedgeworks

Ian Trotter

NC Arb, ISA Cert Arb

- hedge & shrub trimming
- fruit tree light pruning

07771 656553

Trotterhedgeworks@icloud.com



Handyman and Home Improvement Services:

- Carpentry
- Kitchen and bathroom refurbishments
- Fitted wardrobes
- Painting and decorating
- Floor and wall tiling, laminate floors
- Friendly and reliable service
- No job too small
- Fully insured
- Free estimates and advice

07780 366695
iainkent@hotmail.com
www.facebook.com/ikhhomeimprove
Wantage

Issue 203

Personal Assistant/Carer

DBS checked/insured
Teaching/Management background.
Five years as an Activity Organiser
in residential homes
For help or support please call 07968983673

Mel Taylor Photography

Providing Dog, Equine, Newborn & Child
Portrait Photography
Studio or Location shoots,
NEW GREETING CARDS & POSTCARDS for sale
Local Wildlife and Scenes. See website for full details
www.meltaylorphotography.co.uk

Registered Dietitian

Liane Reeves, BSc (Hons) Nutrition, MSc Allergy
HCPC registered, MBDA

Expert personalised dietary advice for teens and adults.
Consultations held at Wantage Osteopathic Practice, 1
Church St. Wantage. To discuss how dietary advice can
help you and to arrange an appointment: Tel: 07947 053396
Email: info@reevesdiets.co.uk



Springboard Coaching, Mentoring & Leadership Development

It's your turn..
Maximise your potential and enhance your wellbeing.
Find new ways to meet challenge and flourish in change.
Contact Suzy Alder for a free chemistry session.
International Coach and mentor. Applied positive Psychology Practitioner.
aldersuzy@outlook.com / 07774686877

Mel Taylor Dog Training

Fun and Engaging Dog Training for you and your
Puppy/Dog
Positive reward based training to get real life results.
Agility Training for Fun or Competition
See website for full details.
www.meltaylordogtraining.co.uk

COMPUTER PROBLEMS? CONVERSION TO WINDOWS 10?

A locally-based service (from Letcombe Bassett) has
been helping people here for the last 15 years
Moderate Rates Same Day Service
Charles Rowe Tel: (01235) 766000 anytime
Email: ccrowe@waitrose.com

Local Independent Caregiver with years of
experience in Dementia, Parkinson
and companionship .
Will consider waking or sleeping night.
DBS checked, insurance and references available
on request. For more information,
please call or email Roselyn on 07857464043
roselyn.jiwunde@aol.com

Pilates classes

for ladies (Thursday's) and men (Friday's) held at
Letcombe hall at 9.30am. A few places available in each
class to start in new September term 2022. Please get
in touch if interested, beginners through to experienced
welcome. Contact Rachel on 07801 824293 to discuss.

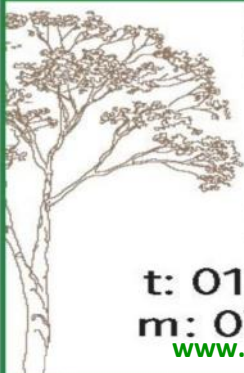
200 Club results

200 Club Draw — No 4		July 2022
73	Phil HODGSON	£50
19	Thelma MOULD	£25
56	Jean ENGLISH	£15
49	Anne WILLIAMS	£10
113	Betty SHARP	£5
Special Draw:		
141	Athene MILLER	£25
95	Dennis STOCK	£20
210	Rory HENRY	£10
203	Cliff BREALSPEAR	£10
109	June MATTHEWS	£10
47	John HOWARD	£10
63	Des WILLIAMS	£10
New Numbers Draw 118		
118	Georgina HALLWORTH	£5



COMMERCIAL/DOMESTIC PROPERTIES
PROFESSIONAL WINDOW CLEANING
PROFESSIONAL CARPET CLEANING
 FULLY INSURED AND RELIABLE
 TELEPHONE 01235 511541
 MOBILE 0797 00 51111
 Email: millbrookservices1@gmail.com
 www.millbrookcleaning.co.uk
 48 Cronshaw Close Didcot OX11 7JU

trotter treeworks



Ian Trotter – arborist
 NC Arb, ISA Cert Arb

- tree crown reducing/
thinning/lifting/reshaping
- pollarding
- tree felling/dismantling
- fruit tree pruning
- hedge trimming/removals

t: 01235 258575
 m: 07771 538575
www.trottertreeworks.co.uk

We Clean Ovens

...so you don't have to!



Call us today to have your cooking appliances sparkling, using our own eco friendly products.

Our oven cleaning experts will leave you free to enjoy your valuable leisure time.



oven
 oven valeting service
 Local | National | Affordable

Call TODAY for LOCAL Service **01235 239938**
Ovenu.co.uk/oven_cleaning/south-oxon

D K Electrical Services

Daniel
 Local Electrician

07817 457832

Daniel-Electrician@outlook.com

City & Guilds
 Insured
 Domestic clients only



Skip Hire Caged Tipper Waste Management

01235 760555

info@aasvogel.co.uk www.aasvogel.co.uk

[Mention The Letcombe Register when you call]



Gabi's Cleaning Service

Cleaning at its finest
High quality, friendly and flexible
cleaning service.
Ironing~Carpet cleaning

07771391209 ~ gabipapp@icloud.com



Issue 203

Warborough Farm

Sadly the Good family are leaving Warborough Farm at the end of June and Sallie and Tessa are moving not too far, to Kingston Lisle.

The family has enjoyed over 50 years at Warborough and have seen many changes. The farm was all arable when they arrived and the village supported two pubs and two shops, one of which was a busy Post Office. The Richmond Homes site was a busy agricultural research station.

The level arable land has been sold to our very good neighbours, the Smith family. The allotments are included in this but will continue to be run as allotments by Eddie Jenkins and any enquiries should be directed to him.

The remainder of the farm is being sold to the Ruane family from Stanford Dingley, Tony and Rachael with teenage children, Rosie and JJ. They are new to the agricultural scene but the Good family is confident that they will continue to embrace and enhance the wonderful wildlife sanctuary that has been developed at the farm whilst continuing to farm the land in a less intensive way. We are optimistic that the permissive paths will remain open and the Goods ask the village to be grateful for the opportunity to use these paths and to respect this privilege.



Letcombes Gardening Club - Topical Tips

Summer is in full swing now and the weather is finally agreeing with us! I hope you're all out there in your garden taking time to sit and relax.

If you feel inclined then a bit of dead heading won't go amiss. The hot weather and bright sunshine tends to make the rose blooms look a little dry and tired so snip them off before you end up with lots of brown petals littering the ground. You should also do this if you have bedding plants, as it will encourage more flowers to form.

More drastic steps can be taken with plants like hardy geraniums and delphiniums. If you cut them right back then you will get new fresh growth and, hopefully, a second flush of flowers.

If you grow bearded iris then they will have finished flowering now so you can set about dividing them. This will also rejuvenate them if they've started to get congested.

I went to Jekka's herb farm the other week and she gave us all a telling off for not feeding any plants we grow in pots. She pointed out that a newly potted up plant only has food for about 8 weeks. After that it is surviving on 'water and our love' and whereas she would get nice and slim like that it wouldn't be sustainable!! She's right and I'm definitely a culprit here, so if you are too then give your potted plants a bit of TLC and sustenance.

Moving to shrubs and trees, if you have a deciduous magnolia then you can prune it this month if it needs controlling.

Remember to keep watering any trees or shrubs that you have planted this year.

Now here's a bit of a 'niche' tip for you. If you grow bamboo (and I hope it's in a pot otherwise you may eventually be able to apply to host a panda in your garden), remove any tall flowering stalks as these will greatly weaken the plants and may even make them die.

Now everyone knows by now that I'm not a great one for lawns but I feel I should remind you to set the mower a little higher in the very dry weather. If you do get brown patches then don't worry, as it will recover. If you must have a uniformly green swathe then here's a watering tip for you that I found on the web. Put a jam jar on the lawn and set the sprinkler going. When you have 13mm of water in the jar then turn off the sprinkler as this is the optimum amount to avoid wasting water but to wet the roots thoroughly. Now I didn't know that. Did you?

I don't have much to say on fruit and veg this month but watering is obviously one job that must be done during the dry weather. You should also hopefully be reaping the benefits of all your hard work and harvesting away. Stop picking rhubarb by the end of the month to allow it to recover.

You can start sowing overwintering crops like spring cabbage, chicory and raddichio.

Keep an eye open for potato blight and destroy the plants as soon as it strikes.

Well I think that will do for now so pull the cork from the bottle, pour yourself a glass of wine, sit in a quiet spot in your garden and admire and enjoy!



Issue 203

Letcombe Regis Village Hall and Recreation Ground Trust

The Recreation Ground and Village Hall Trust held its Annual General Meeting on 30th May and it was pleasing to have several villagers in attendance.

Richard Taylor our outgoing chair gave his annual report and contributions were also provided by the Clubs. A full report is included below.

Sadly Richard also announced that as well standing down as Chairman of the Trustees Committee he had also decided to resign resigning as a Trustee. Good news though, Gordon Lundie has joined the Trustees to bring us back to our full complement for the committee and Jane Hornsby has been co-opted on as an additional member. At the following Trustees meeting, it was agreed that Jeanne Lapsley and I would act as Co-Chairs for the remainder of this calendar year to allow new Trustees to familiarise themselves with the Trust before a new full time Chair was elected. I should like to express mine and the Trustees grateful thanks to Richard for his support and commitment to the Trust as a Trustee and subsequently as Chairman and for his ongoing support during this transition.

The Village Hall continues to be heavily booked by villagers, regular user groups and a restricted numbers of wedding parties and was fully booked for May and June. Unfortunately one of our air source heat pumps which provide heating to the hall has failed but we are negotiating with suppliers and the manufacturer to restore this to working order before the winter months. In addition a Trustee working group is progressing the plans for an improved children's playground area and anticipate works will begin in the Autumn. Thank you to all those who have been involved. We hope the refreshed and new equipment will be enjoyed for many more years to come.

The Sports and Social Club based at the Pavilion, and which is open to all villagers for a minimal membership fee, continues to be a popular meeting place and venue for special events.

Unfortunately the plans to plant a woodland on the old Riding Club Field have had to be put on hold because of an overgrowth of thistles and nettles which make planting impossible and a land improvement plan is now being developed. This may take two years to achieve but the plan remains to plant this area when the land is in a suitable condition.

Finally the Trust accounts, show a healthy balance to maintain and improve our excellent facilities and will be published in the August Register.

Mike Light and Jeanne Lapsley
Joint Acting Chairs.

Letcombe Regis Recreation & Village Hall Management Committee Minutes of Annual General Meeting 2021 held on Tuesday 21st July in Letcombe Regis Village Hall

Present Richard Taylor (chairman), Claire Youldon, Mike Light, James Stewart, John Castle, Jeanne Lapsley, Gill Gwalchmai, Elspeth Horridge (secretary)

In attendance Gordon Lundie, Lindsey Henry, St John Dickson, Richard Pitman, Judy Vaughan Williams

1. Apologies Mary Harwood (treasurer), Paula Broad,
2. Minutes of Previous AGM - agreed and approved
3. Matters arising – none
4. Chairman's report - During 2021-22 The Recreation Ground and Village Hall Trust held 7 meetings. Although Covid was still very much present, the Village Hall was able to be open for both regular and occasional users without significant restrictions. The AGM was held in July 2021.

Cont. pages 7, 8, 9

As you can imagine, after reopening, enquiries for the Village Hall meant that our Coordinator, Claire, was kept very busy, both with regulars wanting to come back, as well as fresh enquiries from new users.

Work to refresh and improve the play equipment in the Children's Play Area has started, and I am hopeful that we will see the improvements in place later this year. In addition, there is now a plan in place to develop the Old Riding Club so that over time it will become a small wooded area with paths for both Villagers and Visitors to enjoy.

2021 saw the return of Village Cricket, and there was a full schedule of matches throughout the summer. The Trust is grateful to not just the Cricket Club, but also the Riding Club, Tennis Club and Football Club for continuing to maintain their areas of the Recreation Ground so that it can be enjoyed by all, and not just those participating in the specific sport.

In March and April improvements were made to the Sports Pavilion with the addition of a new patio and patio doors. This has enhanced the building significantly, which has allowed increased use, as well as a more enjoyable experience for the members and guests. On July 31st the Football Club and Sports and Social Club organised an extremely successful "Village Fun Day", which was very well attended. I do hope that a similar event will be organised in the future.

We all look forward to the coming year with optimism that there will be further improvements to the Village Hall and Recreation Ground, and I am sure you will all agree that the facilities are a credit to the Village.

As I step down as Chair, I would like to thank all the Trustees for their support, and particularly Claire for her hard work and dedication to the role of coordinator. I wish the Trust all the best for the future, and hope that it continues to provide excellent facilities for the Villagers and guests.

5. Treasurers report – The accounts will be published in The Register next month and any queries can be forwarded to Mary. RT reported that the Trust was in a strong financial position and main focus on 2 projects being the playground and the Old Riding Field.

6. Club reports

Cricket Club

The 2021 season saw the return of normality with Covid restrictions being gradually lifted. Many cricketers though will never forget the call from the umpire of "over and sanitise", as precautions over handling a cricket ball were taken very seriously.

On the field, results were mixed, with the Saturday team losing as many as they won, and the Sunday team sometimes struggling for players, or their opposition struggling. We hope that this is a temporary blip in the aftermath of the Covid pandemic. The Wednesday evening team enjoyed success, just missing out on promotion to the top division.

The Cricket Club are extremely grateful to the Sports and Social Club for the work that has been done on improving the patio area, patio doors and bar facilities. It makes for a very pleasurable experience when playing cricket.

We look forward to the 2022 season with a fair degree of optimism, and hope that the Weather Gods are kind to us.

Football Club

Letcombe Football Club had a mixed season during 2021/22. The first team finished in mid table in Division Two South of the Hellenic League, and reached the final of the Faringdon Memorial Cup for the second successive year, where we lost 2-0 to Clanfield development.

At the start of the season we had difficulty finding a manager and players for our reserve team, and we are grateful to Simon Sutton who stepped forward to run the team and recruit players. They finished 9th of 10 teams in Division Two of the North Berks League.

The club parted company by mutual consent with manager Garry Cooke in March, and the club would like to record its sincere thanks to him for all his hard work both on and off the pitch during the last five years. Player Joe Blackwell kindly took over the manager's job for the remainder of the season.

Riding Club Presented by Lindsey Henry

We have had another busy year maintaining the arena and field, organising activities and to grips with It and social media. At the beginning of the year the arena surface was topped with recycled carpet, a major task which took many hours to distribute and spread. The next job was to spread woodchip around the perimeter of the arena to try to stop weeds encroaching. Our jump wings and poles need freshening up and we have a working party for this task on Wednesday 31st May. A large area to the north of the arena has been left un-mown, as this is where holes tend to appear and the ground is very rough. Around this area we would like to expand and vary our offering of cross-country jumps and some of the older ones come to the end of their life. This would enable us to offer cross-country training clinics along side the jump and pole clinics. Rider-friendly latches have been installed to both gates on Muddy Lane, which means riders no longer have to jump on and off to open them. In April last year we planted hedgerow whips between the arena and football pitch. They are now flourishing and we hope they will mature nicely into wildlife friendly, robust screening. Despite trying to avoid holding clinics while football matches are on, we have had several occasions when both facilities are being used. This needs to be addressed as we have had several incidents when the ball has been kicked into the arena whilst the riders are in there – not a good mix! We are starting to get more active on social media and have a website that members can renew their membership, book clinics and keep up-to-date. We have a Facebook page as well as Instagram, all very useful once we have got to grips on how to make the best use of them. In the future, finances permitting, we would like to install a mobile field shelter where we can keep all our equipment tidily and protect it from the elements. A tack sale is planned for September and a fund raising event in early autumn.

Sports & Social Club

After lock-down, the Sports & Social Club bar reopened on the 23rd April. The new patio, wall and bifold doors were completed in time for opening. These are used and enjoyed by the members and guests every time we are open. Our thanks go to Phill and his team for making such an excellent job of this.

The Sports & Social Club is run by a committee, which is completely voluntary. The bar is run by a smaller sub-committee, and we are extremely grateful to those members who volunteer to help out – both behind the bar and with other tasks, such as cleaning, and keeping the bar well stocked.

The Football Club, in conjunction with the Sports & Social Club organised a Village Fun Day and Music. This was originally planned for June, but because of uncertainty over restrictions, it was eventually rescheduled for 31st July. This was a great success, raising funds for two badly injured footballers, and also giving many villagers and friends an afternoon and evening to remember.

"Pizza at the Pavilion" events took place on a monthly basis, and were also very successful and well attended. These will continue throughout the summer months, weather permitting.

There was an "Open Mic" night in December. This was a well attended event, and had at least 10 different performers, ranging from the age of 8 to 80! We do hope to put on another of these this year. We also put on a magic show with "Magic Peter" in January. This was enjoyed by children and parents/grandparents alike.

Darts continues to go from strength to strength, with there now being two well-established teams. The "A" Team gained promotion to Division 1 of the Wantage and District Darts League, whilst the "B" Team are battling hard in Division 3. New players are welcome to join.

The Sports and Social Club is open to all to join as a member, so please take advantage of this Village asset and come along. We are generally open every Thursday and Friday from 6pm, and then on Saturdays and Sundays from 5pm, although this does sometimes depend on sporting fixtures. We look forward to the coming year being even more successful than the last.

Tennis Club

We currently have 127 members of which 65 are from the Letcombes and 25 are juniors. Adult membership is again held at £45 and £10 children, for 12 months of unrestricted access (£90 for a family) and also includes automatic membership of the Sports and Social Club. Our Sunday morning and Wednesday evening Open Club sessions are much better attended and we would love anyone to come to any of these to meet us and have a knock, beginners especially welcome. We regularly run social events open to all, to meet and encourage locals to start or return to tennis. Our coaching partner NTA run on Saturdays, 4 well supported junior coaching sessions from 10am and an adult keep fit session from 9am.

PS we desperately need a few adhoc volunteers to help run the junior events and sa few socials.

- Election of villagers to management Committee - Alison McClintock had resigned earlier in the year and Gill Gwalchmai stepped in to replaced her mid-year. Richard Taylor had announced that due to work commitments he wished to stand down from the Trust after the AGM. An application to be elected as a Trustee had been received from Gordon Lundie. Both Gill and Gordon are welcomed as the Trustees to replace Alison and Richard.
- Any other business - Jeanne Lapsley formally thanked Richard on behalf of the Trustees for the work he had done for the Trust as a Trustee and as chairman for the last three years.



TRAFFIC REGULATION NOTICE
ROAD TRAFFIC REGULATION ACT, 1984

Notice is hereby given pursuant to Section 14(2) of the Road Traffic Regulation Act, 1984, that the Oxfordshire County Council

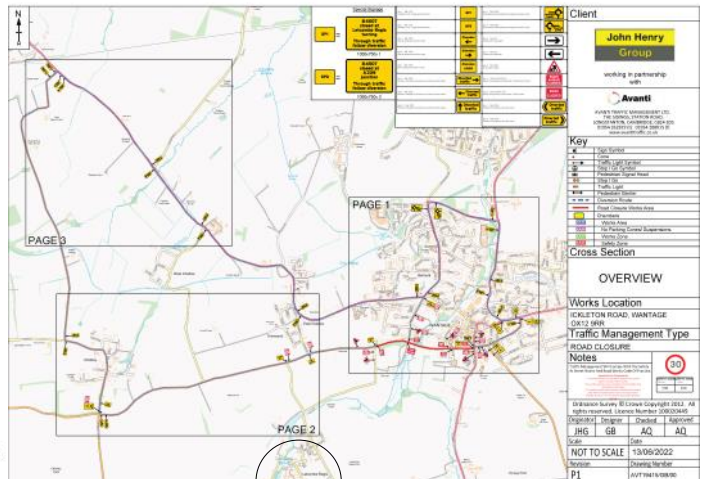
TEMPORARILY PROHIBITS THE USE OF THE HIGHWAY BY ALL MOTOR VEHICLES

- LOCATION:** Ickleton Road, Charlton, Wantage
- REASON:** To facilitate De Silting, Test Rodding Ducts & Proving cable routes for installation of Subduct for Openreach works. Will include excavation work to clear any blockages found while Desilting.
- DURATION:** Starting on 11/07/2022
The anticipated completion date is (date included). (Traffic Regulation Notices cover a maximum of 5 consecutive days.) These works will be overnight. 20:00 – 05:00.
- ACCESS:** Limited access will be maintained for emergency service vehicles and for frontages within the closed section of road, subject to the progress of the works

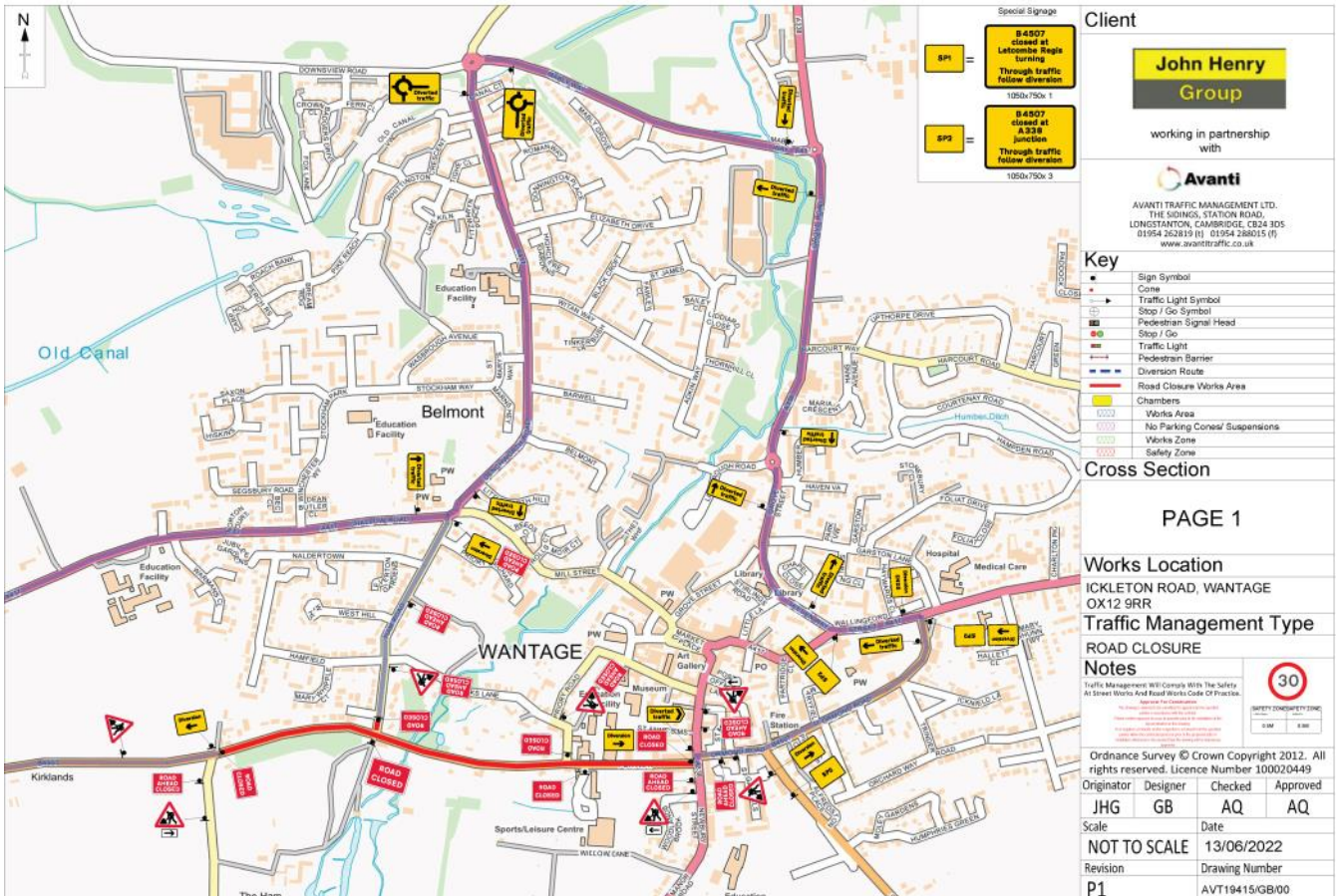
SUGGESTED ALTERNATIVE ROUTE: Ham Road, Denchworth Road, Mably Way, Grove Road, Seesen Way, Wallingford Street, Ormond Road and Vice Versa.
Ickleton Road, New Road, Faringdon Road, Ham Road and Vice Versa.

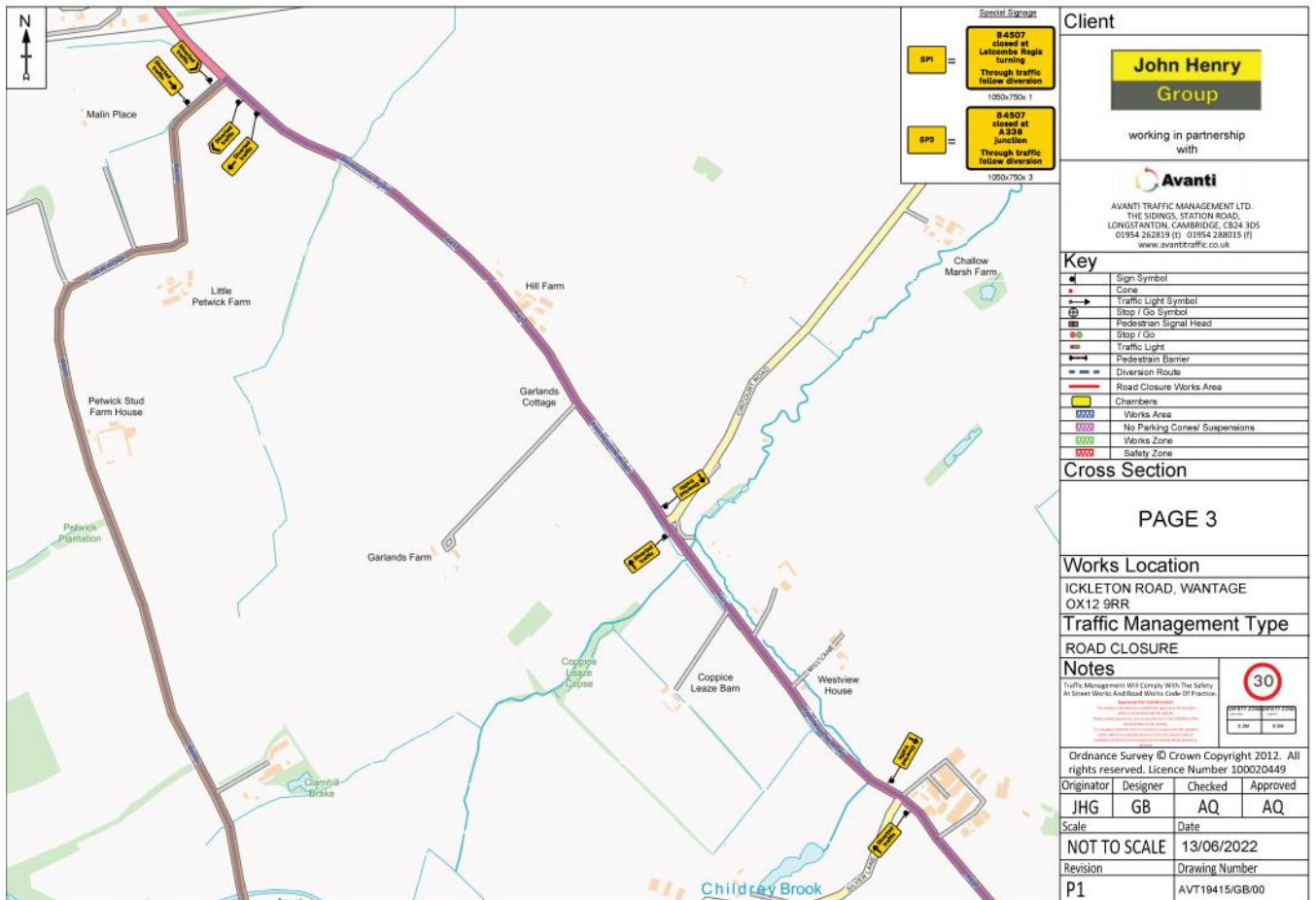
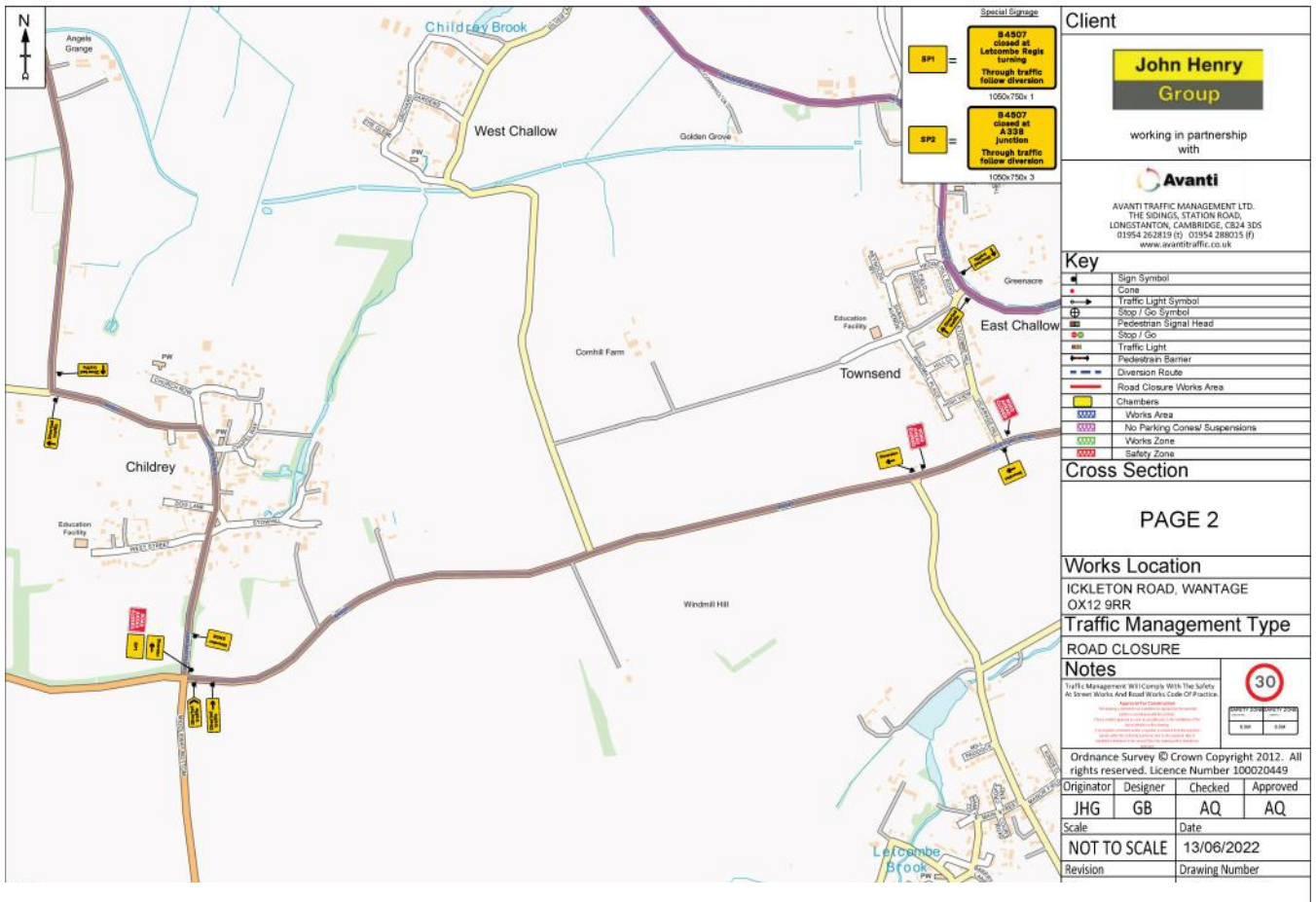
Paul Fermer
Paul Fermer, Assistant Director of Environment and Place

Date: 20/06/2022



Letcombe Regis
(for context)







Issue 203

Film Club

End of season round up.

What an end to this years season! For our last film until September we had a record breaking 71 people come to see the excellent 'Belfast', a perfect film to finish on. We now take a break until September. We are already building a list of films for next season that we think you will enjoy, starting with 'The Duke' planned for September 14. This is a very enjoyable British film starring the great pairing of Jim Broadbent and Helen Mirren. More details in the August Register but in the meantime save the date in your diary.

We have some other good news to share - we have just donated £500 from Film Club surplus funds to the Village hall and Recreation Ground Trust and asked for it to be added to the playground redevelopment fund. This money has built up from the small surplus funds we generate when we have good attendance at Film Club. So a big thank you to all our film fans!

If you have any films you think our Letcombe audience would enjoy, please let us know by emailing: letcombefilms@outlook.com.

Enjoy the summer and we look forward to seeing you in September.

St Andrew's

The bells of St Andrew's rang out through the village on Friday 3rd June to coincide with the Service of Thanksgiving at St Paul's Cathedral celebrating the Queen's Platinum Jubilee. A weekend of festivities had begun in Letcombe Regis on 2nd June but this was St Andrew's addition to this joyful time.

On 12th June the Rev Mary Harwood presided at the Holy Communion Service and the banns were read for the first time for Georgia Dunmore and Caspar Lumley and for the third time for Emma Snell and Nathan Payne. Emma (grand-daughter of Sue and John Peskett) and Nathan are to be married on 16th July when St Andrew's bells will peal once again.

Our lay-led service on 26th June was taken by Sue Worth of East Challow. It was lovely for us to have Sue to take the service and to preach, six years after she first preached in St. Andrew's. We are fortunate to have the ministry team who are helping out ably during the interregnum.

As everyone knows we have no Rector at the moment, but it is good to know that the process for the appointment of a new Rector is well advanced. The Ridgeway parishes have agreed a profile of the area, the churches, and what we are looking for in the new Rector. This will be sent to all those who apply for the post. An advertisement to go in the Church Times and on the diocesan website has also been agreed. The current plan is that the advertising will start in July and run through till mid-August with a deadline for applications on 21st August. Shortlisting is scheduled for 31st August with final interview on 19th September. All those on the interview panel hope to make the appointment that day.

St Swithin's Day on 15th July is a date often remembered for the saying that if it is fine on 15th it will stay fine for 40 days or alternatively it will rain for 40 days. St Swithin, the patron saint of Winchester, asked to be buried outside the cathedral so he was beneath the raindrops pouring from on high. His body was later moved indoors on 15th July - supposedly - and it rained then and this led to the legend!

As ever The Signpost give details of the services for the month. To confirm once again there is a Holy Communion on the second Sunday of the month and a lay-led service on the fourth Sunday. Every Monday there is a Prayer Group in the church at 10.30 am and said Evensong at 3pm.



The Letcombes Conservation Group

Butterfly Conservation's *Big Butterfly Count* takes place from 15 July until 7 August. This UK-wide survey is the world's largest butterfly survey. The data collected over 15 minute intervals in the two week period helps to assess the health of ecosystems with information on the population and habits of various butterflies and some day-flying moths. All the information to prepare for a count, including an identification chart, and to submit observations are available at [Big Butterfly Count \(butterfly-conservation.org\)](http://Big Butterfly Count (butterfly-conservation.org)). Butterfly species have suffered a string of poor years with numbers of many common species in decline. The 2021 count was the worst Big Butterfly Count year on record, with the lowest ever number of butterflies and moths recorded, despite record numbers of entries from the public. On average, people recorded 9 butterflies or moths per count, which was down from 11 in 2020, and from 16 in 2019. More counts have been undertaken and submitted year on year, but sadly there have been fewer butterflies and moths around to be counted as over the last forty years the UK has witnessed declines in over three-quarters of its butterflies. Sir David Attenborough, Butterfly Conservation president, has commented that 'Many of our once common and widespread species like the Large white, Small copper and Gatekeeper have started to struggle, mirroring the declines of rarer species.' He also notes that 'Spending time with nature offers us all precious breathing space away from the stresses and strains of modern life; it enables us to experience joy and wonder, to slow down and to appreciate the wildlife that lives side-by-side with us.'

Fortunately this experience is possible in the countryside around the Letcombe villages where butterflies still thrive in



some areas. At Hackpen Hill in May more Small Blues (left) were seen than ever before and on an outing to a small valley north of Sparsholt Firs, kindly led by Gillian Taylor, members of the Conservation Group were lucky to observe a wide range of butterflies including Small and Common Blues, Dingy Skippers, Brown Argus (right), Small Heath as well as Five-spotted Burnet, Mother Shipton and Silver Y day-flying moths. The highlight of the outing though was observing six Duke of Burgundy butterflies (below), photo credits: Mark Bradfield. The origin of this butterfly's name is lost in the mists of time but this tiny, early spring butterfly, previously common in woodland clearings, is now a rare and rapidly declining butterfly,



primarily found on rough, un-grazed or lightly grazed limestone or chalkland grassland. Most colonies hold only a handful of butterflies, the males gathering in sheltered territories, or leks, which are occupied annually where they



squabble over females and launch themselves against all-comers. The females are elusive and spend much of their time resting or flying low to the ground looking for suitable egg-laying sites. The eggs are laid in small batches underneath the leaves of primrose and cowslip plants in shade. They hatch within 1 to 3 weeks, depending on weather conditions, then the caterpillars stay hidden during the day, emerging to feed on leaves at dusk. Even after six weeks of feeding, the caterpillars are still less than 2cm long. Weather conditions during this stage are critical to their survival, with summer droughts posing a huge threat. The

caterpillars will leave the food plant to pupate in grass tussocks, over-wintering as a chrysalis until the following spring. These butterflies are just one of the delicately balanced species in the threatened ecosystem of chalk grasslands that requires conservation measures to avoid extinction.



Friends of the Letcombe Valley Nature Reserve

Work parties continue in the Community Nature Reserve on Saturday, 16th July from 13:30 to 16:30. Please meet near the lake notice board by 13:20 for the tasks and safety briefing. Tools will be provided, and refreshments too mid-afternoon, but please take your own work gloves

At this time of year the chalk grass bank in the Community Nature Reserve is a good spot for butterflies including



Large Skippers. Male Large Skippers, photo credit: Charles J. Sharp (CC BY-SA 4.0), often perch in a prominent, sunny position, usually on a large leaf at a boundary between taller and shorter vegetation, awaiting passing females. The males have a thick black line through the centre of the fore-wing but females are less conspicuous. Both sexes may be seen feeding on flowers with faint orange spots on their undersides. The presence of a faint chequered pattern on both sides of the wings distinguishes this species from the similar Small and Essex Skippers, which fly at the same time. The Large Skipper is a widespread butterfly in southern Britain and its range has extended northwards in north-east England since the 1960s. A good news story in conservation.

Along the brook look out for native Water figwort (*Scrophularia aquatica*), also called Water betony, growing up to a metre in height along the brook with its reddish, square stems and pointed, toothed leaves that are winged and evergreen, photo credits: John Kearvell . It is a lovely plant that is quite common on riverbanks, pond margins,



damp meadows and wet woodlands but is not generally well known today although in the past it was used for healing wounds and bruises. Its unusual, tiny flowers are deep maroon with two lips, and conspicuous green sepals that have brown edges; they are held in branches off the main stem and appear in whorls. The plants flower from June right through to September providing valuable nectar for bumblebees, and are pollinated by the Common wasp. Mark Bradfield has noted that this plant seems to have done well in areas along the brook where the



Himalayan balsam has been cleared.

Himalayan balsam (*Impatiens glandulifera*), introduced to the UK in 1839, is a relative of the Busy Lizzie but reaches well over head height, and is a major problem, especially on riverbanks where it grows rapidly and spreads quickly, smothering other vegetation. Between June and October the plants produce clusters of purplish pink flowers, followed by seed pods that open explosively when ripe. Each plant can produce up to 800 seeds and, once established in the catchment of a river, they are transported further afield by the water seeds and can remain viable for two years,. Due to its invasive impact on the environment, Himalayan balsam is listed as a species of special concern under retained European Union law. This means it is an offence to plant or cause these plants to grow in the wild, or intentionally release them into the environment. The most appropriate method of clearance is pulling or cutting the plants before they flower and set seed. The Letcombe Brook Project Officer, Mark Bradfield, organises work parties to clear the plant from along the Letcombe Brook as part of the work to conserve the ecosystem for native plants and animals.



Issue 203

Letcombe Sports and Social Club

Here are the planned events for the coming few weeks. As ever, these are also on the S&SC Calendar here - <https://letcombesportsclub.org.uk>.

Friday 1st July - Pizza at the Pavilion. Please ensure to book your Pizza on the Thursday before.

Friday 15th or 22nd July - Club BBQ. The BBQ we held as part of the Queen's Platinum Jubilee celebrations was so successful, we are planning on doing it again. Date TBC, but expected to be either the 15th or 22nd July.

Friday 5th August - Pizza at the Pavilion. This is a little way off, but plenty of notice never hurts!

There is also going to be a S&SC "House Darts Competition". Some of you may know that we run 2 teams in the Wantage & District Darts League. We have decided to run a friendly internal competition for members. This will be a knockout competition which will be free to enter. All you will need to do is put your name down on the list before the **22nd July**, and the competition will then start in August. As there is a wide variation of darts "abilities", players from the "A" team will be kept apart in the first round, and anyone who gets knocked out in the first round will automatically get entered into the "Plate" competition. This will then run in parallel with the main competition. You then have the chance of getting your name on one of the Club trophies!

The Sports & Social Club AGM will also be held later in July - date TBC.

If you want to find out more about the Sports & Social Club, or are interested in becoming a member, then please contact The Secretary on letcombesportsclub@gmail.com

Richard
Secretary, Letcombe Sports & Social Club

Fibre Broadband Update

At the time of writing, Airband is hoping that the initial section of fibreoptic cabling that runs along South Street and Warborough Road will be active. This is the first of three sections that the company has discussed with the Parish Council. The other two, that covering Richmond Village and that for the rest of Letcombe Regis is subject to agreements that will be presented to Airband's Board later this month. The Parish Council will be organising an open session with Airband as soon as possible once we have clarity on their proposed arrangements.

In the meantime, OpenReach has started to survey the existing telecommunications infrastructure. This will also see fibreoptic cabling being introduced, in this case to offer an alternative to the copper wire based systems that are used for landlines. At this stage there is no real clarity on the timeframe, not least as the timeframe is dependent on any survey findings. The first area surveyed, that again covering Warborough Road, Anvil Paddock and South Street has been undertaken. As soon as further details are available we will keep parishioners informed. If anyone does have any questions please get in touch.

Paul Batchelor (paulb@public-health.ucl.ac.uk)

DELICIOUS WOOD FIRED
PIZZA
AT THE PAVILION

IN FINE SPIRITS
pizza menu
and order details will
be available on:
[facebook.com/infinespirit](https://www.facebook.com/infinespirit)
or call 07789 722138

PLEASE **PRE-ORDER**
YOUR PIZZA ON
THURSDAY

ALL
WELCOME
BAR OPEN FROM 5PM

LOCAL ALES
LOVELY PATIO WITH
GREAT VIEWS

IN FINE SPIRITS
Retro VW Mobile Bar
& Street Food

DATE: **FRIDAY 1st JULY**
TIME: 5pm - 8.30pm
AT: Letcombe Regis Sports and Social Club

We will be taking orders from Thursday between 10am to 3pm. If we are unable to answer (or outside of these hours) please text and we will get back to you. We will be offering slots for collection every 15 minutes to ensure social distancing can happen safely - please let us know your preferred time when calling. Please also advise us of any allergies. Payment will be taken securely over the phone at the time of order to allow for a contactless collection. Telephone 07789722138 or visit www.facebook.com/infinespirit

Platinum Jubilee Celebration - 2/6/22



Photo Credit Paul Batchelor

LETCOMBE REGISTER

To **submit an article** please contact:
 Francesca Engelmann,
 2, The Old Stables,
 Letcombe Regis,
 OX12 9LD
Register@oldstableyard.co.uk
 01235 769310

The views expressed in the Register do not necessarily reflect the view of
 Letcombe Regis Parish Council

Past Registers are available to view,
 along with much more information,
 on the Village Website:
www.letcomberegispc.org

TO **RECEIVE YOUR PDF COPY** OF THE
 LETCOMBE REGISTER, PLEASE CONTACT
 LIZ JENKINS, **THE PARISH CLERK**:
LETREGISPC@GMAIL.COM
 (FOR GDPR REASONS - THE LETCOMBE REGISTER
 HAS NO ACCESS TO THE VILLAGE EMAIL LIST)

Deadline for inclusion is 27th of each month.
 Items will generally appear in the order they were received

July 2022 Click [Here](#) for new 2022/23 waste calendar

Mon	Tue	Wed	Thu	Fri	Sat	Sun
				1	2	3
4	5	6	7	8	9	10
11	12	13	14	15	16	17
18	19	20	21	22	23	24
25	26	27	28	29	30	31
Green recycling Food waste Brown Garden Waste				Grey Landfill Food waste		