






The Letcombe Register



Issue 192

August 2021

VILLAGE DIARY

Mon	Tue	Wed	Thu	Fri	Sat	Sun
						1 <u>Tennis</u> Mix in 10.00am <u>Cricket</u> TBC
2 	3 Yoga w Beth 0945-1045 Village Hall (must be booked)	4 <u>Tennis</u> Cardio 9 - 10 Coaching 10 -11 <small>(Book Buffs moved to Monday 23rd)</small>	5 Pilates with Rachel 9.30 am Village Hall Yoga w Diana 11.15-12.30 Village Hall	6	7 <u>Tennis</u> Cardio 9 - 10am Junior Tennis Coaching 10 -2 <u>Cricket</u> 1pm	8 Holy Communion 10am St Andrew's <u>Tennis</u> Mix in 10.00am
9 	10 Yoga w Beth 0945-1045 Village Hall (must be booked)	11 <u>Tennis</u> Cardio 9 - 10 Coaching 10 -11	12 Pilates with Rachel 9.30 am Village Hall Yoga w Diana 11.15-12.30 Village Hall	13	14 <u>Tennis</u> Cardio 9 - 10am Junior Tennis Coaching 10 -2	15 <u>Tennis</u> Mix in 10.00am <u>Cricket</u> 2pm
16 	17 Yoga w Beth 0945-1045 Village Hall (must be booked)	18 <u>Tennis</u> Cardio 9 - 10 Coaching 10 -11	19 Pilates with Rachel 9.30 am Village Hall Yoga w Diana 11.15-12.30 Village Hall	20	21 <u>Tennis</u> Cardio 9 - 10am Junior Tennis Coaching 10 -2 <u>Cricket</u> 1pm	22 Worship together 10am <u>Zoom Code</u> <u>Tennis</u> Mix in 10.00am <u>Cricket</u> 2pm
23  Book Buffs 7.30pm Sports Pavilion (change of date)	24 Yoga w Beth 0945-1045 Village Hall (must be booked)	25 <u>Tennis</u> Cardio 9 - 10 Coaching 10 -11	26 Pilates with Rachel 9.30 am Village Hall Yoga w Diana 11.15-12.30 Village Hall	27 'Pizza at the Pavilion' 4- 9 pm - tbc	28 <u>Tennis</u> Cardio 9 - 10am Junior Tennis Coaching 10 -2	29 <u>Tennis</u> Mix in 10.00 St Andrew's Concert Joe Barber 7.00 pm <u>Tickets - C Birch</u>
30 <small>Revised Collection</small> Bank Holiday in the Garden Noon to 8 pm Live Music Greyhound Inn	31  Yoga w Beth 0945-1045 Village Hall (must be booked)					

* Most Events shown in the Calendar should still be booked in advance, and could also be changed at short notice. Please check the details before attending. (Items underlined in the diary are hyperlinked)

In this issue:

PARISH COUNCIL / FOOTBALL FLOODLIGHT SURVEY	2	FRIENDS OF LETCOMBE VALLEY COMMUNITY NATURE RESERVE	8
ELECTRICIAN/INTERIORS/ARBORIST/CLEANING/WINDOWS/BEAUTICIAN	3	LETCOMBES CONSERVATION GROUP	9
200 CLUB RESULTS / LADDERADS / MILLENIUM GREEN	4	LETCOMBE SPORTS & SOCIAL CLUB / CRICKET CLUB	10
YOGA WITH DIANA / GARDENING CLUB	5	TENNIS CLUB / GREYHOUND INN	11
OVENU / FILM CLUB / GARDENS OPEN / ST ANDREW'S CONCERT	6	VILLAGE HALL & RECREATION GROUND ANNUAL REPORT	12
FILM CLUB / BOOK BUFFS	7	WASTE CALENDAR / VILLAGE CONTACTS	13



Message from the Parish Council

The major item for this month is the improvement works to the Parish Council Burial Ground, Bassett Road. This should commence in early August and run for 4-6 weeks. It will mean some disruption to existing access and arrangements, and the Parish Council is working with the Trustees to try to keep the impact to a minimum. The project will enhance this already tranquil spot, and provide for better access and parking for those visiting the Burial Ground, and also the users of the recreation ground and Social Club facilities. Please be aware of the potential for large vehicles in the vicinity and be sure to keep yourselves safe in the area. Funding for this project has been achieved through Section 106 monies (as a result of the Richmond Development), and Parish Council Reserves, and we hope that the benefits will be felt by many generations to come. The PC is indebted to Phil Hodgson for his support with this project and I would like to publically express our sincere thanks.

Below you will find a short report on the outcome of the Football Lighting Consultation. Thanks to Cllr Paul Batchelor for coordinating this exercise.

There were a good number of villagers who volunteered to help with work on the Millennium Green, and a great deal of tidying was achieved. Thank you. A further date will be set in September, so please keep your eye on the Register for details.

The Parish Council is aware of the notices concerning the footpath access to Richmond, and is planning to meet with all interested parties to ensure that access is registered and therefore maintained. If you have any concerns please contact the Parish Clerk.

As you will be aware next year will see the Queens Platinum Jubilee Celebrations, with extra Bank Holidays in June, and we would like to seek volunteers to help organise a 'village day' to celebrate this magnificent achievement. If you are interested please can you let either myself or the Parish Clerk have your contact details.

Finally, we hope you can all enjoy a safe, healthy, and 'sunny' summer.

Jeanne Lapsley
Chairman
Letcombe Regis Parish Council.



Letcombe Football Club Floodlighting Request Outcome

At its latest meeting the Parish Council received the analysis of those who had responded to the Football Lighting consultation. From a distribution of 500, of those who responded, 40 expressed their support, 47 were against with 11 neither for nor against. In the light of this the Parish Council agreed that it should support the majority view, that is not to support the proposal.

The rationale people gave when supporting the proposal included that the development would encourage younger age groups to partake in sport while those against felt that it would lead to increased noise and light pollution.

The Parish Council would like to thank all those individuals who took the time to respond.

D K Electrical Services

Daniel
Electrician

07817 457832

Daniel-Electrician@outlook.com

City & Guilds

Domestic clients only

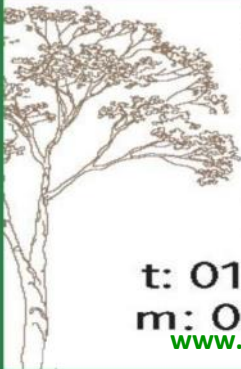


MERRICK INTERIORS

*for all your interior design, curtaining,
upholstery and
soft furnishing requirements
contact 07736707922,*

enquires@merrickinteriors.co.uk

trotter treeworks



Ian Trotter – arborist
NC Arb, ISA Cert Arb

- tree crown reducing/
thinning/lifting/reshaping
- pollarding
- tree felling/dismantling
- fruit tree pruning
- hedge trimming/removals

t: 01235 258575

m: 07771 538575

www.trottertreeworks.co.uk



Gabi's Cleaning Service

*Cleaning at its finest
High quality, friendly and flexible
cleaning service.
Ironing~Carpet cleaning*

07771391209 ~ gabipapp@icloud.com

MILLBROOK SERVICES

EST. SINCE 1994
**PROFESSIONAL CARPET CLEANING
& WINDOW CLEANING**
FULLY INSURED

millbrookservices1@gmail.com

TEL: 01235 511541 MOB: 078144 28395
DIDCOT, OXFORDSHIRE

Visit our webpage to view all our services

www.millbrookcleaning.co.uk



Hazel Lee Jones
Holistic Beauty Therapist

19 Westbrook Grove OX12 0AP

Mrsjbeautyhealing@gmail.com

 Mrs Jones Beauty Grove

07375 362522

200 Club results

200 Club Draw — No 5		August 2021
21	Barb GARDNER	£50
34	Doreen LEVY	£25
62	Pauline KOLINS	£15
103	Guy ELLIS	£10
167	Thérèse CLARKE	£5
Special Draw:		
78	Andy CROSBY	£25
15	Clive & Alison PHILLIPS	£20
83	Valerie BROADBENT	£10
171	Sam RABIN	£10
187	Peter BELLIS	£10
61	Jim BIRCH	£10
88	Sue PESKETT	£10
New Numbers Draw		
234	Hannah & Tom GRIFFIN	£5

<p align="center">Registered Dietitian Liane Reeves, BSc (Hons) Nutrition, MSc Allergy HCPC registered, MBDA</p> <p>Expert personalised dietary advice for teens and adults. Consultations held at Wantage Osteopathic Practice, 1 Church St. Wantage. To discuss how dietary advice can help you and to arrange an appointment: Tel: 07947 053396 Email: info@reevesdiets.co.uk www.reevesdiets.co.uk</p>
<p align="center">COMPUTER PROBLEMS? CONVERSION TO WINDOWS 10?</p> <p>A locally-based service (from Letcombe Bassett) has been helping people here for the last 15 years Moderate Rates Same Day Service Charles Rowe Tel: (01235) 766000 anytime Email: ccrowe@waitrose.com</p>
<p align="center">Personal Assistant/Carer DBS checked/insured Teaching/Management background. Five years as an Activity Organiser in residential homes For help or support please call 07968983673</p>
<p align="center">Hazel Lee Painter & Decorator Interior & Exterior. Fully Insured. Local & Reliable Female Decorator No job too small Mob: 07866 509683 hazel.lee78@hotmail.co.uk</p>
<p align="center">Mel Taylor Photography Providing Dog, Equine, Newborn & Child Portrait Photography Studio or Location shoots, NEW GREETING CARDS & POSTCARDS for sale Local Wildlife and Scenes. See website for full details www.meltaylorphotography.co.uk</p>
<p align="center">Toms Topaz Den</p> <p>An independent consultant for The Body Shop At Home offering the full Body Shop Range at a unique price. Based in Letcombe Regis offering free delivery on all orders https://www.facebook.com/groups/TopazDen tomsutherland92@gmail.com 07747535917</p>
<p align="center">Mel Taylor Dog Training Fun and Engaging Dog Training for you and your Puppy/Dog Positive reward based training to get real life results. Agility Training for Fun or Competition See website for full details. www.meltaylordogtraining.co.uk</p>

Millennium Green

Thank you to all the volunteers for your hard work.

You were a great team.



Next session end of September (with coffee and cake!)

Watch this space for date.



Yoga with Diana

New Yoga class Thursdays 11.15-12.30pm in the Village Hall. Yoga for health, fitness and well-being. Mixed ability class. Everyone welcome.

Contact Diana Reynolds mob 07522 202666 or reynodi@gmail.com. Website www.dianareynoldsyoga.co.uk

We don't currently have anyone from the village in this class so it would be really nice if some people could come along! As one of my students said "this Village Hall is just made for yoga!"

Letcombes Gardening Club



Topical Tips

August heralds the end of summer and often there is a bit of a break in the garden before the autumn perennials start to 'strut their stuff'. Your challenge is to try and minimize that, which means taking trips to plant nurseries and garden centres to see what is in flower, snapping them up and bringing them back to your plot! In the meantime lets see if I can think of some things you can be getting on with to keep you busy.

Don't forget to keep deadheading as this will keep your existing plants flowering. Some will need cutting back instead, for example hardy geraniums, to encourage more growth and flowers. Leave the flower heads of ornamental grasses in place though as they look marvellous on a frosty day in winter.

You can prune back climbing and rambling roses now if you wish, as long as they're not repeat-flowering varieties. You can also tackle your wisteria.

Watering is a definite priority if you have pots but also don't forget to water plants, trees and shrubs that you have put in this year. They will really appreciate regular 'drinks'.

On the propagation front, you can still lift and divide bearded iris if you didn't do it last month (note to self here!). Cuttings of tender perennials like pelargoniums can also be taken now.

If you're going round gently deadheading, then check if any perennials have produced seed and collect this for sowing later in the autumn.

Here's a tip for greenhouse and conservatory plants. If they are suffering from pests (like mealy bug or red spider mite for example), take them outside and give them a good hose down. Make sure you clean up any fallen leaves or spilt compost as well as this will help to prevent the pests from spreading.

On the fruit and veg front we're talking about harvesting, always a satisfying task as long as other 'wildlife' haven't already helped themselves!

You should thin out apples and pears to two per cluster on your trees and continue to summer prune trained varieties. August is definitely the last month that you should prune stone fruits like plums, damsons, cherries and peach. You want to aim for an open structure.

If your aubergines and tomatoes develop blossom end rot, black sunken patches on the fruits, then make sure you don't allow them to dry out as it's caused by a calcium deficiency and the water will transport the calcium in the soil to the plant.

Finally you can still sow lettuce and radish this month and get a crop before the weather turns cold.

Well I trust that gives you enough to be getting on with and I hope you enjoy this last month of summer in your garden!

We Clean Ovens

...so you don't have to!

Call us today to have your cooking appliances sparkling, using our own eco friendly products.



Our oven cleaning experts will leave you free to enjoy your valuable leisure time.



oven^ü
oven valeting service
Local | National | Affordable

Call TODAY for LOCAL Service

01235 239938

ovenу.co.uk/oven_cleaning/south-oxon



LETCOMBE FILM CLUB

Letcombe Regis Village Hall,
Wednesday 8th September


Tickets £5 Doors open 7.30pm
Film starts at 8.00 pm

Refreshments - Soft Drinks, Wine, Beer and Tea/Coffee

Open Gardens 2021



I would like to thank everyone involved in Open Gardens this year for what has been a great success. Despite the circumstances including a relatively small window to publicise the event and the less than positive weather (the torrential downpour at 6.30am did not bode well), the event exceeded expectations. Over 250 people visited the 10 gardens and enjoyed superb refreshments (should the village decide to enter a Great British Village Bake Off, Letcombe Regis would be a strong contender) at the village hall and, as by 2.00pm the weather had improved, ice creams on South Street. Without the efforts of all: the gardeners, many of whom should consider publicising their extraordinary efforts on Gardener's World, the more than capable catering party and the support team, the event would not have been the success it was. A total of over £1800 was raised which will be split equally between the children's playground and the church funds.



St. Andrew's Concert

Joe Barber
plays a
Recital of organ music
at 7.00 pm
on Sunday, 29 August 2021
in St. Andrew's Church, Letcombe Regis

Enjoy a treat of live music from
the local organist in a varied programme.

Tickets: £12.50 available from
Christine Birch, 763529 or cbirch1997@aol.com
Proceeds to St Andrew's Church Fabric Fund



Issue 192

Film Club Returns!

The Sapphires, Weds 8 September

It's hard to believe that its been 18 months since we had our last Film Club screening in Letcombe, and what a strange life its been since then. We are really delighted to be bringing back a little bit of 'normal' in September with our first film of what will hopefully be a new, uninterrupted season for 2021/22.

The film we've chosen for our return is a critically acclaimed feel-good Australian musical drama with a serious message about life for indigenous Australians. Set in 1968 and loosely based on the true story of four Aboriginal women from the same family in New South Wales who formed a band called the 'Cummeragunja Songbirds'. Following a talent contest they are discovered and go on to become the successful band 'The Sapphires'.

Chris O'Dowd, whose credits include 'The IT Crowd' and 'Bridesmaids', stars and shows us yet agin his comic skills. Australian stars Deborah Mailman and Jessica Mauboy lead the top notch singing as sisters in the band and entertain with their fantastic renditions of American Soul favourites. Released in 2012 at the Cannes Film Festival, 'The Sapphires' became one of Australia's biggest box office hits. Let's hope its a hit in Letcombe!

COVID Safety

Although restrictions have been lifted, we want to make sure everyone feels safe and comfortable so are planning to have some precautions in place. Depending on any changes to the governments advice we will:

- ask that you wear masks while moving around the hall. You can remove masks while seated.
- use more smaller tables so that you can sit in family/friends groups
- ask that you bring exact money for entrance if possible (£5 per person)
- sorry, no free popcorn on tables, but small bags will be available to buy
- we will serve refreshments, possibly via a table service (tbc)

We will confirm all the arrangements in the September Register.

Doors open 7.30pm, film starts at 8pm. Come early to get refreshments and settle in!
We are really looking forward to welcoming both familiar faces and new film lovers.

If you have any questions or concerns please email us - letcombefilms@outlook.com

Future Film Club dates for your diary:

13 Oct: Official Secrets

10 Nov: The Keeper

Book Buffs CHANGE OF DATE



The next meeting will be held on **MONDAY 23rd August** at the Pavilion on the Recreation Ground at **7.30pm**. We shall be reviewing 'The Dark Flood Rises' by Margaret Drabble and 'Miss Austin' by Gill Hornby. Please return 'The Dark Flood Rises' to the blue box outside Blandy's Barn.



Friends of the Letcombe Valley Community Nature Reserve

Hopefully the monthly work parties will continue on the third Saturday of each month, the next one is on 21 August between 13:30 and 16:30. Please meet near the pond notice board on the Community Reserve by 13:20 for the tasks and safety briefing. As you are aware, extra caution is still advisable, so please bring your own work gloves, mask, drink, and snack if you plan to join the work party. There is no longer a need to notify the organisers in advance.

The recent sunny weather and summer flowers in the Reserve have been good for butterflies. Native plants, commonly referred to as 'weeds' in gardens, are often excellent either as food plants for caterpillars or to provide nectar for adult butterflies. The thistle-like plant Common Knapweed, also known as Black Knapweed, found

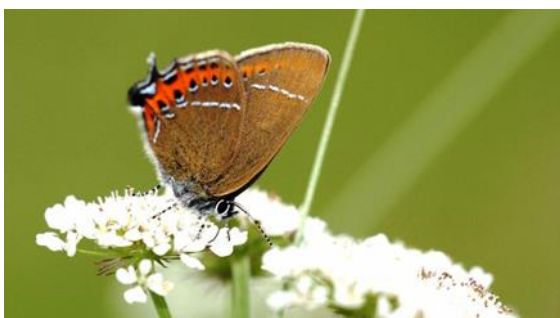


blooming on all kinds of grasslands from June to September is a huge favourite of many butterflies, including Marbled Whites (left), Common Blues, Meadow Browns, and Small Tortoiseshells (right), and is sometimes covered in these species in the Reserve (photo credits: Gillian Taylor). The larval food plant of the Marbled White is grass whilst the Small Tortoiseshell caterpillars feed on Stinging Nettle leaves.



The Big Butterfly Count continues until 8 August this year; each count only takes 15 minutes and is a great wildlife activity for children. For details of how to get involved see the Butterfly Conservation site at <https://www.bigbutterflycount.org/> which also provides a free butterfly identification chart to record observations of nineteen species to download or a free app for iOS and Android mobiles. Prime sites for observing butterflies are on the wildflowers in the Community Reserve and also from the permissive path around Segsbury Castle. Both localities offer wonderful walks in this Area of Outstanding Natural Beauty in the North Wessex Downs.

BBOWT are urgently raising money to enlarge the Upper Ray Meadows nature reserve by purchasing nearly 80 acres of floodplain fields and hay meadows at Ludgershall Meadows. The Upper Ray Meadows nature reserve has been managed for wildlife by BBOWT for 40 years and the addition of the adjacent land will create a wildlife corridor from this reserve to the Leaches Farm nature reserve. With BBOWT's expertise the Ludgershall Meadows will become abundant with wild flowers and insects, an ideal home for species like rare Black (left photo credit: BBOWT) and Brown Hairstreak butterflies and hunting Barn Owls. Connected areas of wildlife habitat should help



to reverse the alarming decline in wild species and assist their resilience to the impacts of climate change, such as prolonged drought or flooding. BBOWT have only until 10 September to raise £330,000 to secure Ludgershall Meadows from the Esmée Fairbairn Foundation which purchased the land when it came onto the market to assist BBOWT in the short-term. If you are interested in donating to this appeal, please visit the BBOWT website at:

[Ludgershall Meadows Appeal | Berks, Bucks & Oxon Wildlife Trust \(bbowl.org.uk\)](https://www.bbowl.org.uk/)



The Letcombes Conservation Group

Many residents appreciate that our villages are surrounded by the open countryside of the North Wessex Downs Area of Outstanding Natural Beauty, but over the past 50 years there has been a decline in the abundance of two thirds of the UK's plant and animal species for a range of reasons including habitat loss. Fortunately, in addition to the open countryside, gardens in the UK provide more space for nature than all the National Nature Reserves put together. Moreover, gardens are not only a vital resource for wildlife, but also can provide corridors of green space between areas of open countryside allowing species to migrate between shelter and food sources. Many once-familiar garden visitors such as hedgehogs, house sparrows, starlings and common frogs are less common than in previous decades. By planting native plants and trees in gardens or by creating a pond, pollinators, birds, mammals and invertebrates may be enticed into a network of mini nature reserves. To make information available for those people wishing to find out more about encouraging wildlife into the estimated 24



million gardens in the UK, the RHS and the Wildlife Trusts created a joint initiative called 'Wild About Gardens'. Each year a different theme on an animal or habitat is chosen to inspire action; this year the theme is 'Bring Back Our Beetles'. Beetles such as ladybirds, stag beetles and the thick-legged flower beetle are natural controls of garden pests such as aphids and snails and, in turn, are food for hedgehogs and birds making them an essential part of a balanced ecosystem. Unwanted beetles, such as lily and rosemary beetles, may be removed by hand to re-



duce the number of nibbled leaves. Visit the website [homepage | Wild About Gardens](#) to download a free guide about bringing back beetles and for advice about wildlife gardening from the Wildlife Trusts and RHS. (Photo credit: Gillian Taylor, left - Lesser Stag Beetle; right - Longhorn Beetle.)

Another important campaign is the Road Verge Campaign by Plantlife for the conservation of flower species. An amazing 45% of the total British flora grow on our road verges, specifically over 700 species of wildflowers in nearly 500,000 kilometres of rural road verges. Sadly the wildlife value of these mini-havens is under pressure from a desire for 'neatness', recent difficulties with litter and grass clippings collection and safety and access, as well as budget, constraints. Plantlife started the campaign in 2013 for councils and highways authorities to 'cut less, cut later' followed by the more recent 'No mow May' slogan, to allow flower seeds to ripen and disperse to improve the flora year on year on an area of verge equal to half the remaining flower-rich grasslands and meadows. Where wild flowers flourish, a multitude of bees, butterflies, birds and invertebrates thrive and the good news is that 7 out of 10 councils have changed their road verge management plans to encourage wildflowers. East Suffolk Council's plan started in the past year included the phrase '*Pardon the weeds, we're feeding the bees*' whilst Monmouthshire County Council's new project on managing verges and raising awareness employed the brilliant phrase '*Nature Isn't Neat*'. *The Good Verge Guide* is available as a free download at [Plantlife :: Good Verge Guide: your go-to guide for transforming local verges into wildlife havens](#) and Plantlife are currently developing a new road verge website for which expressions of interest on the subject may be input at [complete this short survey](#). Residents also can contact their local council by using FixMyStreet to request re-wilding of wildflower road verges; step-by-step instructions are available in a blog by MySociety, the not-for-profit organisation that aims to empower civic participation, at [Check out the blog](#).





Letcombe Sports and Social Club

The Sports & Social Club continues to be popular, with Friday evenings enjoyed by many, particularly when the Kids Football hosted by the Football Club is on.

Although the Government rules around Covid have been further relaxed, we will continue to encourage our members to stay safe, as we are not convinced that we are out of the woods yet.

The flowers at the front of the Sports Pavilion continue to brighten up the patio area very nicely, and receive plenty of compliments. Members are encouraged to offer suggestions of any other improvements which they would like to see to the Club.

Darts practice takes place on a Thursday evening from about 7.30pm, and if anyone is interested in joining in, or indeed would like to join one of the teams when the league restarts in (hopefully) September.

Pizza at the Pavilion is planned for Friday 27th August. Details on how to order Pizzas will be posted on Facebook nearer the time.

Richard
Secretary, Letcombe Sports and Social Club

Letcombe Cricket Club



The Saturday team have had a slight dip in form throughout July, losing 3 matches and drawing one. They are still sitting at 5th out of 10 in Division 7C, but with 2/3 of the season gone, promotion to Division 6 looks extremely unlikely now.

Sundays have fallen foul of either the weather, or Covid (the opposition, not Letcombe) in July, with just one match at home to Hendred taking place. This resulted in a defeat, the scores have been withheld to save some red faces!

The Wednesday evening team are still riding high, with 2 wins and a tie in July so far. The team are 3rd, just behind Hendred and Kingston Bagpuize with 3 rounds of matches left to play. If they manage to gain promotion, it will be to the top Division of the midweek league.

The remaining home fixtures are:

Saturday 1 pm	August 7 th	Kingston Bagpuize II
Sunday 2 pm	August 15 th	Ramsdell
Saturday 1 pm	August 21 st	Steventon II
Sunday 2 pm	August 22 nd	Hanney
Saturday 12.30 pm	September 4 ^h	Sunningwell
Sunday 12.30 pm	September 5 th	President v Chairman XI
Sunday 12.30 pm	September 12 th	Oxon CC SS

Richard
Secretary, Letcombe Cricket Club

Letcombe Fun Day

The Tennis club is supporting this Saturday's Fun Day with "Free Family & Juniors Fun Tennis sessions" run by our coaches, plus "Tea & Cakes" in the Pavilion.

Starting at 4 pm, with a 45 minute Junior Fun session followed by a similar activity Family session. Both sessions are free and open to all, with rackets provided.

You can pre-book via our Tea & Cake Stall (from noon) or at the courts.

Nearly 1:1 Adult Coaching Available

Our Wednesday Cardio Keep Fit & Coaching sessions still survive with just 3 & 2 attendees respectfully. The GOOD news is that for £28 / month, you get considerable 1:1 LTA accredited coaching, plus group practice.

The Cardio runs from 9 am and an All Ability Stroke Clinic from 10 am both sessions are great fun and tailored to your fitness / ability.

This is a wonderful opportunity to get great individually tailored out-door exercise and coaching, suitable for rusty players returning to tennis or total beginners.

Please POP along for up to 2 FREE taster sessions any Wednesday morning and ask for Molly.

Sunday morning & Wednesday evening Mix In

At last we have got 4 or 5 members that come regularly on a Sunday morning so you should be guaranteed someone to play, but would love a few more to make up numbers, starting at 10 am and running to lunch on Sundays and 6:30 pm on Wednesdays, everyone is welcome to pop along for a gentle knock up or a random game.

To enable you to check who will be there we have 2 WHATSAP groups, to be included please text your name and WERUP4IT to 07772518938.

Vandalism

The courts last week were vandalised by 4 young boys (circa 13 years old), with the gate forced, equipment scattered around and the hand dispenser ripped off. They were noticed playing football and riding bikes on the courts, but not requested to leave.

If you ever notice such behaviour please ask them politely to leave, if they are abusive, phone the police referring to crime number - 20210723/1518

THE GREYHOUND INN

LETCOMBE REGIS · OXFORDSHIRE

REVISED OPENING HOURS

Open for food Wednesday-Sunday
Bar only Monday-Tuesday 4-8pm

BANK HOLIDAY MONDAY 30TH AUGUST

ALL DAY DINING 12-8pm

LIVE MUSIC IN THE GARDEN

GIN BAR

BBQ-INSPIRED MENU

www.thegreyhoundletcombe.co.uk
email: info@thegreyhoundletcombe.co.uk
Tel:01235 771969



During 2020-21 The Recreation Ground and Village Hall Trust held 9 meetings. Due to the unprecedented situation with the pandemic, the Hall was closed from Monday 23rd March 2020 until it was allowed to reopen in a limited way from July 4th 2020. Many of our regular hirers chose not to resume because of concerns about Covid, and there were many cancellations and postponements of events. The Hall had to close again from November 5th 2020 until December 4th 2020, and close again from December 26th 2020 until April 2021.

I would like to express my thanks to all the Trustees who spent much time reviewing documents and guidance relating to Covid, and helping to draft all the signs, notices and procedures which we were required to put in place. This was not a trivial task as I am sure many of you can appreciate.

We were fortunate enough to be able to claim various Government Grants which had been made available to businesses which were either forced to close, or had restricted opening. This helped to offset the loss of income.

In April and May 2020, the Hall was redecorated, and although many of the events planned for 2020 did not take place, the Hall continues to receive excellent feedback by users and visitors.

I would like to thank Claire Youldon for the continued excellent job she does as Hall Coordinator. This is an important role, which ensures the smooth day-to-day running of the Hall.

The hard work of the volunteers from the various Sports Clubs who use the Recreation Ground is also appreciated. They ensure that the Recreation Ground as a whole, as well as their own "patch" are kept neat and tidy for all to enjoy. Also, a note of thanks to James Stewart, who with the "loan" of a tractor and hedge cutter from a local farmer, cut all the hedges around the Recreation Ground in February 2021.

The AGM originally planned for May 2020 was postponed until October 2020, and was held via an online meeting, as were all the Trust meetings from April 2020 through until March 2021.

After many years of service as a Trustee, Eddie Jenkins has stood down. Karen Johnson has also stood down after serving as Vice-Chair. I would like to thank both of them for their valuable input into the running of the Trust, and wish them well for the future. We have had 2 new Trustees join, John Castle and Alison McClintock, so we are at our full complement of 9 Trustees.

=====

July has seen increased use of the Village Hall, and the Recreation Ground continues to be well used. Unfortunately, I have to report that very recently there has been some minor vandalism caused by some young boys who came from Wantage. The Tennis Courts gate was pushed through, and tennis rackets and the hand sanitiser unit strewn around the courts. Also a part of the Riding Field fence was damaged behind the cricket net, and the boys in question (only 13-14 years old) were abusive to people setting up for the recent wedding in the Village Hall. At least one of the boys has been positively identified and the matter has been reported to the Police. I am awaiting contact from the local PCSO so I can provide more information.

Richard Taylor
Chairman, Letcombe Regis Village Hall and Recreation Ground Trust.

The views expressed in the Register do not necessarily reflect the view of Letcombe Regis Parish Council

Deadline for inclusion is the 27th of each month.

Francesca Engelmann,
2, The Old Stables,
Letcombe Regis,
OX12 9LD

Register@oldstableyard.co.uk

01235 769310

Items will generally appear in the order they were received

IF YOU ARE NOT **ALREADY** ON THE VILLAGE EMAIL LIST AND WOULD LIKE TO RECEIVE, NOT JUST THE REGISTER, BUT ALSO UPDATES ON LOCAL ISSUES, DELIVERED DIRECT TO YOUR INBOX, PLEASE CONTACT THE **PARISH CLERK** DIRECT: LETREGISPC@GMAIL.COM

Past Registers are available to view, along with much more information, on the Village Website: www.letcomberegispc.org

Waste Calendar

Download your own copy of the 21/22 Vale of the White Horse Waste calendar [Here](#)

Once you click on the download it will take you to a PDF along with the holiday collection changes too.

August 2021						
Mon	Tue	Wed	Thu	Fri	Sat	Sun
						1
2	3	4	5	6	7	8
9	10	11	12	13	14	15
16	17	18	19	20	21	22
23	24	25	26	27	28	29
30	31					
Green recycling Garden waste Food waste				Landfill Food waste		

Vale of Whitehorse Waste collection information can be found [HERE](#)