

# The Letcombe Register



Issue 177

May 2020

IF YOU ARE NOT ALREADY ON THE VILLAGE EMAIL LIST AND WOULD LIKE TO RECEIVE NOT JUST THE REGISTER, BUT ALSO UPDATES ON LOCAL ISSUES, DELIVERED DIRECT TO YOUR INBOX, PLEASE CONTACT THE PARISH CLERK:  
[letregispc@gmail.com](mailto:letregispc@gmail.com)



The Top of Gramps Hill

More of you are joining the Village email list all the time, to receive local updates and the PDF of the Letcombe Register.

Welcome to you all and I hope you like the new format, now that we are released from the constraints of printing.

Thank you for your kind comments thus far, I hope to keep it up.

Some of you have been sharing with neighbours who have no internet access (observing the guidelines!) - thank you.

If you have contributions you think might entertain us please send them to me :

[Register@oldstableyard.co.uk](mailto:Register@oldstableyard.co.uk)

The Register is also available to view, along with much more information on the village Website:

[www.letcomberegispc.org](http://www.letcomberegispc.org)

## Message from the Parish Council

What Extraordinary Times!

Firstly some diary updates –

The Annual Parish Meeting scheduled for Monday 18 May, has been postponed until further notice as a result of the ban on meetings due to Covid 19. The Annual Report and the Financial Statement will be published in the Register in due course and of course any related comments or questions will be welcomed via the Parish Clerk.

The impact of the Covid 19 measures on social distancing and self-isolation also means that the Parish Council Meetings are approved to take place via 'virtual' means. The next meeting is scheduled for Monday 18 May, starting at the earlier time of 7.45pm, and we will be using the online facility of Zoom to conduct the meeting. You can still 'be there' but must have Zoom downloaded to your device and also notify the Parish Clerk at least 7 days in advance. You will then receive an email inviting you to join the meeting. All questions must also be with the Parish Clerk at least 7 days in advance. We appreciate that this is a significant change but as with all previous meetings we welcome your attendance and participation. We have extended the meeting with an additional period from 7.45 – 8pm to allow for us all to have time to get set up. Please bear with us as we get used to this new way of working.

You will be aware that the Parish Council focus since the last meeting has been the village response to the pandemic and I would publicly like to thank Cllr Light, Cllr Benton, Cllr Batchelor and the Parish Clerk for stepping forward to join me in organising our efforts. It has been a huge task but the teamwork and willingness that has been demonstrated has been exceptional. Also huge thanks to all those who have stepped forward to

volunteer and the good neighbours who are also providing regular unsung support.

The normal business of the Parish Council has also continued and elsewhere in the Register (pages 16-18) you will find details of the significant highways works scheduled for the coming months. This is a never ending task and the PC is grateful to Cllr Benton for leading on this.

The planned improvements to the PC Burial Ground have had to be delayed because of the current crisis, but will be pursued once the lockdown restrictions have been revised to allow for Building Companies, and the like, to resume working.

The village and its environs have provided a beautiful and peaceful arena for the permitted daily exercise and the PC is grateful for everyone's contribution to keeping our community safe and well by complying with the governments advice. We will continue to issue the weekly Bulletin via the village email to keep you as up to date with local information as possible, and also ensure there are links to the nationally changing picture via the PC Website. Please email the virus support address ([Letcomberegis.virusupport@btinternet.com](mailto:Letcomberegis.virusupport@btinternet.com)) if you need help or telephone the publicised number.

We look forward to you joining us on the **18 May, 7.45pm.**

Stay safe

Jeanne Lapsley  
Chairman  
Letcombe Regis Parish Council



## Inside this issue:

RACING DAYS	2
LADDERADS ETC	3
BOOK BUFFS QUIZZES	4
CONSERVATION GROUP LETCOMBE FILM CLUB	5
NOSTALGIC POEM 200 CLUB UPDATE	6
WASTE CALENDAR & INFO	7
WARBOROUGH FARM ACCIDENTAL DELIVERIES	8
BRAINTEASERS	9
MORE BRAINTEASERS	10
LIONS UPDATE SAINT OF THE MONTH	11
COVID CRAFTING PHOTOGRAPHIC CLUB	12
GARDENING TOPICAL TIPS NATURE RESERVE	13
ST ANDREW'S NOTES RG&VH UPDATE	14
TENNIS CLUB	15
UPCOMING ROAD CLOSURES (3 PAGES 16 - 18)	16
VILLAGE HALL INFO VILLAGE CONTACTS	19

## Racing Days



Jack Bramley riding Dusty Foot in 1932. Dusty Foot, a Grand National runner, was owned by Jock Whitney of the United States, and trained by Jack Anthony. In the dusky background are Warborough Cottages and the elms at Cox's Edge.

Born in Northumberland, Mr. Jack. Bramley served his apprenticeship in Newmarket and came to the Village on the 28th October, 1928. I hope he won't mind my saying that - judging by the twinkle in his eye at 81 - he must have been quite a lad (CN)

Taken from the 'Voices' series the original Editor, Chris Needham collected for the Spring '89 Letcombe Register (and I should have acknowledged his Leonine contribution in our April issue). Two more photos of the Lions on page 11

Well, racing was the village then, wasn't it? You can hardly imagine it now.

Yards everywhere. Stables, you know. Lads walking around the streets.

Dressed up, too. Smart. I watch racing on the television and it just doesn't bear comparison. Each day and everyday - seven days a working week - it was boots and leggings, breeches (or jodhpurs, later), polo-necked jerseys. Some of the yard had their own special colours. If you were with the horses at Ascot, it'd be black tie in those days.

All on a couple o' quid a week. The boots cost seventeen and six. Well, you'd never have managed without the odd winning or two. You'd get an extra pound - maybe two if you were lucky - after a winning day.

The War put paid to all that. Tell you the truth things were changing before then. You'll have heard of the strike, I ex-

pect. That was in 1937. Solid? Pretty well. Oh there were a few, perhaps. It's not easy when there's animals to look after. But you couldn't manage on two quid a week. There wasn't a village from Lambourn to Blewbury that wasn't affected. It was solid enough. A bit of ill feeling perhaps, in some quarters. You know some going on working. Like any strike. It was the strike that never ended. Lots of the lads went over to Milton. To the depot. There was the war scare. Many of them were filling sandbags. After the war they never came back.

It was different for some of us. Ernie Piggot - he was at the Old Manor - he offered to pay up. It wasn't easy.

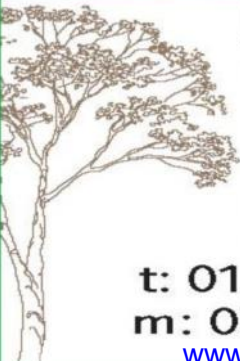
Want to see my union card? There it is: paid up, as you can see, all through 1938. TGWU. That was the union. See the name on the cover? Ernest Bevin. He was in Southampton at the time. Became Foreign Secretary after the war. Anyway, we accepted the offer. We went back. I'll tell you how it was. I remember a Boxing Day - 1928 I think. We were up at four. I felt I'd hardly been to bed. This was at Jack Anthony's yard - where Graham Thorner is to-day. We had four horses racing that day, but only three motor horse-boxes. So I had to go by train. We used the train as well

in those days. Ten past seven from Wantage Road for Wolverhampton. So off I set. You had to lead the horse, of course. Oh yes, no riding. No fear. I remember the horse's name - Talpa it was. Through the village - still dark - over Camel (you know, the cross-roads) and on to the station.

There were very few houses out there then. Mainly fields. Well, anyway, we got the horse on to the train and we were on our way. At Wolverhampton there was a special station near the racecourse.

It was a great day for Jack Anthony. We won at Wolverhampton and so did his other three horses. By four o'clock it was time to get ready for the train again. When we got to Wantage Road it was dark, of course. I'll tell you, I wasn't leading Talpa back. Not after all that. I was up and away and we trotted and walked back to the village. At ten past ten I was having a pint in the Sparrow. There was a fair crowd in there. Being Boxing Night the hours were a bit flexible. After that I set off for Wantage and ended up at a dance. I enjoyed dancing and there were some good dances in Wantage in those days. Burning the candle at both ends? Well, you're only young once.

# trotter treeworks



**Ian Trotter – arborist**  
 NC Arb, ISA Cert Arb

- tree crown reducing/thinning/lifting/reshaping
- pollarding
- tree felling/dismantling
- fruit tree pruning
- hedge trimming/removals

**t: 01235 258575**  
**m: 07771 538575**  
[www.trottertreeworks.co.uk](http://www.trottertreeworks.co.uk)

**Mel Taylor Photography**

Specialising in Providing Fine Art Dog, Equine, Newborn and Child Portrait Photography Portraits Studio or Location, See website for full details  
[www.meltaylorphotography.co.uk](http://www.meltaylorphotography.co.uk)  
 01235 763359 or 07818427876

**The Barn Tea Rooms, Court Hill Centre**

Homemade cakes, light lunches.  
 Just off A338 on the Ridgeway - and it's all downhill on the way back!  
**Open 7 days a week 10.30 to 4.00**  
 Tel: 01235 760253

**Registered Dietitian**  
**Liane Reeves, BSc (Hons) Nutrition, MSc Allergy**  
**HPC registered, MBDA**

Expert personalised dietary advice for adults and children. Consultations held at Wantage Osteopathic Practice, 1 Church St. Wantage. To discuss how dietary advice can help you and to arrange an appointment: Tel: 07947 053396  
 Email: [info@reevesdiets.co.uk](mailto:info@reevesdiets.co.uk) [www.reevesdiets.co.uk](http://www.reevesdiets.co.uk)



## Garden & Plant Design

**RHS Qualified  
 Plantswoman and Horticulturalist**

Does your garden need re-designing?  
 Do you have a border that needs rejuvenating; a shady, dry, or damp area that needs attention?  
 Or would you like one-on-one practical gardening advice?  
 Whatever your gardening needs, please email:  
[helenajwhall@hotmail.com](mailto:helenajwhall@hotmail.com)

**COMPUTER PROBLEMS?  
 CONVERSION TO WINDOWS 10?**

A locally-based service (from Letcombe Bassett) has been helping people here for the last 15 years  
**Moderate Rates Same Day Service**  
**Charles Rowe** Tel: (01235) 766000 anytime  
 Email: [ccrowe@waitrose.com](mailto:ccrowe@waitrose.com)

**Clare Mowforth**

Personal Trainer - Pre & Postnatal Exercise Classes  
 Group Exercise - Circuits - HIIT - Running Programs  
**Engage, Restore, Transform**  
[clare@coreprogress.co.uk](mailto:clare@coreprogress.co.uk) 07732 036 072  
[www.coreprogress.co.uk](http://www.coreprogress.co.uk) /facebook.com/coreprogressPT

**Hazel Lee Painter & Decorator**

Interior & Exterior. Fully Insured  
 Local & Reliable Female Decorator  
 No job too small Mob: 07866 509683  
[hazel.lee78@hotmail.co.uk](mailto:hazel.lee78@hotmail.co.uk)

**Personal Assistant/Carer**

DBS checked/insured  
 Teaching/Management background.  
 Five years as an Activity Organiser in residential homes  
 For help or support please call 07968983673

**Sophie Sayer, Specialist Teacher, Dip SpLD**

I live locally and offer 1:1 specialist lessons using a multi sensory approach, supporting learners, aged 6 – 10 years, who have specific learning differences. Areas taught include reading accuracy and comprehension, spelling, writing and numeracy.  
 I have a full DBS certificate and up-to-date training in Safeguarding and Child Protection.  
 Telephone: 07866 565881

## D K Electrical Services

Domestic, Commercial Clients

Previously **Daniel Kerr**  
 Electrician

**1st Call Electrical Services**

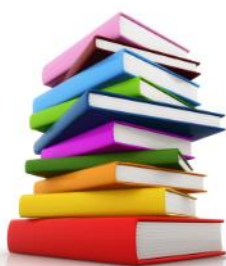
01235 769481 / 07817 457832

Enquiries [1stcall@hotmail.co.uk](mailto:1stcall@hotmail.co.uk)  
 Free Consultations

87, Hamfield  
 Wantage, Oxon  
 OX12 9EG

Part P  



# Book Buffs Literature Quiz - answers

(with thanks to Sue Hannon)

I trust you are all finding the time to do a lot of reading - all those titles on the bookshelves you have always meant to tackle as well as relaxing and enjoyable reads.

I hope you enjoyed last month's quiz - answers below - and perhaps it gave you ideas for new authors to explore.

Keep reading and keep safe.

- |   |  |
|---|--|
| 1. Who was the youngest of the three Brontë writing sisters?  | 1. <b>Anne Brontë</b> (1820-49 - other sisters were Emily, 1818-48, and Charlotte, 1816-55, plus a brother, Branwell, 1817-48. |
| 2. "In my younger and more vulnerable years my father gave me some advice which I've been turning over in my mind ever since," is the start of which novel? (This book was a recent Book Buff's read) | 2. <b>The Great Gatsby</b> (F Scott Fitzgerald, 1925)  |
| 3. What was the pen-name of Charles Lutwidge Dodgson?   | 3. <b>Lewis Carroll</b> (1832-98)  |
| 4. Which statesman won the 1953 Nobel Prize for Literature?   | 4. <b>Sir Winston Churchill</b>  |
| 5. By what name is the writer François-Marie Arouet (1694-1778) better known?   | 5. <b>Voltaire</b>   |
| 6. "Reader, I married him," appears in the conclusion of what novel?  | 6. <b>Jane Eyre</b> (by Charlotte Bronte, 1847)  |
| 7. In 1960 the UK publishing ban was lifted on what 1928 book?  | 7. <b>Lady Chatterley's Lover</b> (D H Lawrence)   |
| 8. Who wrote Brighton Rock and Our Man in Havana?   | 8. <b>Graham Greene</b>  |
| 9. In what city does Leo Tolstoy's novel War and Peace begin?   | 9. <b>Saint Petersburg</b>   |
| 10. What was Samuel Langhorne Clemens pen-name?   | 10. <b>Mark Twain</b> (1835-1910)  |
| 11. "Make them laugh; make them cry; make them wait..." was a personal maxim of which novelist?   | 11. <b>Charles Dickens</b>   |
| 12. What is the land of giants called in Gulliver's Travels?  | 12. <b>Brobdingnag</b>   |

## This month's Literature Quiz

### BOOK SWAP

Book Swop is available in the Church Porch.

Free to anyone, but please write in the deposit/return date of the book so that follow on borrowers can plan their selected books necessary quarantine period.

All contributions to the collection are very welcome, simply leave in the Church Porch.

1. How many ghosts visit Scrooge in A Christmas Carol?
2. Which novel begins with the line "It was the best of times...." ?
3. Holden Caulfield is the main character in which book?
4. In which book is there an inn called Admiral Benbow?
5. Who wrote 'The Lord of the Flies'?
6. Who is the best-selling fiction author of all time?
7. Who wrote 'Mrs Dalloway'?
8. Who does Mr Brownlow rescue?
9. Which book begins with the line "For many days we had been tempest tossed...." ?
10. Carlo Collodi created which famous children's character?
11. What is the nationality of the author Paulo Coelho?
12. Mr Darcy is an arrogant gentleman in which novel?

## The Letcombes Conservation Group

How fortunate we are to live within this beautiful area of the countryside during the 'lockdown'. There are many wonderful sights to observe as Spring has unfurled in fine weather, and it is thanks to our local farmers that permissive footpaths add to the rights of way and give us access to some areas otherwise beyond observation. Do note the path routes on new maps strategically placed around Warborough Farm and remind those visitors who show no regard for the requirement for dogs to be on a lead that they are on a working farm. April has brought not only an awareness of the farming cycle as fields have been prepared and new shoots appear, but also the spectacle of cowslips filling the fields around and within Segsbury camp and small mammals such as a field vole snuffling amongst the remains of autumn's fallen leaves on a field path. Butterflies like the Orange-tip and Brimstone have been numerous, whilst red kites and buzzards soar overhead and the first swallows have been seen skimming the fields for insects.



Red kites are part of one of the most successful and longest running global conservation projects. After years of egg collection, red kites had disappeared from England by the end of the nineteenth century and were reduced to a few pairs in the old oak woods of mid-Wales in the 1980s. As one of only three globally threatened species with a suitable habitat in the UK, plans for the reintroduction of kites began in 1986 with 93 birds from Sweden and Spain being released in northern Scotland and the Chilterns from 1989. Successful breeding from these birds was recorded at both sites in 1992 and reintroductions ceased when offspring reared in the wild raised their own young for the first time in 1994. Following this success, the breeding populations were expanded to five areas in the East Midlands, West Yorkshire, Derwent Valley in the North-east, central Scotland and Dumfries and Galloway

from where they have spread to other regions including Northamptonshire, the Grizedale Forest in Cumbria, Stirlingshire, west Perthshire, Aberdeen, Northern Ireland and, of course, Oxfordshire. Happily, the Welsh population strengthened to form about half the total number of red kites in the UK today alongside around 900 breeding pairs across England and Scotland. In contrast the birds over-wintering in Spain, including many from Germany and France, have declined by about 50% over past decades making the red kites here increasingly important at around 7% of the global population. Red kites are protected at all times; it is illegal to disturb the birds while they are nesting or at any other time. Enjoy watching their majestic flight with the characteristic forked tail and mew-like call.

## Letcombe Film Club

With 'lockdown' continuing and Film Club in hibernation, we hope you are enjoying watching films at home. Last months Register has a full list of DVDs that we can lend you if you want catch up on films we have shown since Film Club started. Just email us on: [letcombefilms@outlook.com](mailto:letcombefilms@outlook.com).

### What's available on line

There are lots of good films available online, including many on 'free to view' services.

It didn't seem that long ago that BBC iPlayer had little to offer by way of film choice and, even then, rarely did any hang around for more than a week. But all that has changed and there are currently around 70 films available, many for a month or more.

So when you are looking for a change from all those boxsets, here are just a few that caught our eye :

- Victoria and Abdul
- The Sense of an Ending
- Primary Colors
- The Damned United
- The Sapphires
- Source Code
- Spooks
- Absolutely Fabulous - the Movie
- Steve McQueen - The Man and Le Mans

And for younger viewers:

- Paddington 2
- Swallows and Amazons
- Shaun the Sheep
- A Monster Calls

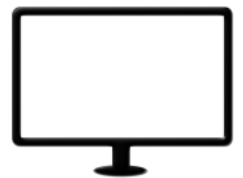
There is also a great selection of documentary series that may be of interest - just dip in and out:

**Inside Cinema** : 35 short (5-8 mins) films on all aspects of cinema.

**Mark Kermode's Secrets of Cinema** : 7 x 60 min documentaries, each featuring a different genre.

**Life Cinematic** : three 60 minute interviews featuring Sam Mendes, Edgar Wright and Sam Taylor Johnson.

Hopefully we will be back with Film Club soon, but until then, happy home viewing!



## Tanners and Bobs

Back in the days of tanners and bobs, when Mothers had patience and Fathers had jobs. When football team families wore hand me down shoes, and T.V. gave only two channels to choose.



Back in the days of three penny bits, when schools employed nurses to

search for your nits. When snowballs were harmless; ice slides were permitted and all of your jumpers were warm and hand knitted. Back in the days of hot ginger beers, when children remained so for more than six years. When children respected what older folks said, and pot was a thing you kept under your bed. Back in the days of Listen with Mother, when neighbours were friendly and talked to each other. When cars were so rare you could play in the street. When Doctors made house calls; Police walked the beat. Back in the days of Milligan's Goons, when butter was butter and songs all had tunes. It was dumplings for dinner and trifle for tea, and your annual break was a day by the sea. Back in the days of Dixon's Dock Green, Crackerjack pens and Lyons ice cream. When children could freely wear National Health glasses, and teachers all stood at the FRONT of their classes. Back in the days of rocking and reeling, when mobiles were things that you hung from the ceiling. When woodwork and pottery got taught in schools, and everyone dreamed of a win on the pools. Back in the days when I was a lad, I can't help but smile for the fun that I had. Hopscotch and roller skates; snowballs to lob. Back in the days of tanners and bobs.

My oh my, every word rings a bell, not only 'jumpers for goalposts' but other things as well.

Throwing sticks into trees, those conkers WILL fall, bikes with no brakes, a fixed wheel was all, 'cowhorn' handlebars, no mudguards at all.

Throwing stones at each other, health and safety unknown, no hard hat playing cricket, plastic 'box' for your manhood but no case for your phone.

Phones were in boxes that stood on the street, bright red, firmly they'd stand, no phone in your pocket, that was just for your hand. No TV at home, that was a luxury for the others, Saturday morning pictures with a shilling from our Mother's. Sixpence to get in, sixpence to spend, hours in the sweet shop, the choices? No end.

Blackjacks, fruit salad, sherbet fountain, gob stopper, maybe a jubbly? or maybe a 'whoppa'?

A teatime, a bedtime, no 'raking the streets', food that was 'good for you' with very few treats.

School uniform, short trousers, cap, satchel, a tie.

Darned holes in your socks, leaky pens, that awful blue dye.

Blackboard dusters, ammunition for 'Sir', It came your way if his wrath you'd incur. The cane, the slipper, or the flat of his hand, no redress for violence, parents didn't understand. "You must have deserved it, they don't punish you for nought" "you're not there to have fun, you're there to be taught"

Well taught I was, and taught well may I say,

It gave me the values I hold to this day.

Respect for those wiser, consideration of others, role models to emulate, love for our Mothers.

At the time there were no grudges, it was just part of life, we had FUN without telly, or computers, no strife.

Modern kids miss out on the lessons we learned, they expect all to be given, nothing is earned.

*by David Wood*

## Letcombe Regis 200 Club - Update

The first 200 Club draw will be delayed due to the coronavirus situation.

There are a few subs outstanding at the moment. It would be helpful if the money, cheques or cash, could be put through my letterbox.

Ian Taylor  
Tara  
Letcombe Regis



I have worked really hard to ensure that all website addresses and email addresses (shown in blue) featured in the Register will take you straight to their destination when you click on them in the PDF.

Let me know if you come across one that doesn't and I will try to add the hyperlink for next month.

## Waste Collection Information from VoWH (Taken from the website as of 23rd April)

<http://www.whitehorsedc.gov.uk/>

Most collections are running as normal.

Good news - we have reopened our bulky waste collection service - online orders only - more [here](#)

**Warning:** Recently a fire broke out on one of our bin trucks after a resident in Great Western Park put batteries in their recycling. Please do not put batteries or any electrical items in your bins for the safety of our crews and people nearby.

Based on government guidelines, we are asking *residents with symptoms of Covid-19 to double bag any discarded tissues and other waste and leave for 72 hours before placing them in their main black rubbish bin.*

- We have had to suspend our kerbside collections for batteries, small electricals and textiles recycling service because the centres that would normally accept these items are currently unable to take them for processing. We ask people to keep these items until the service has resumed and not put them in the general rubbish or recycling bins because of the fire risk to bin trucks (see above).
- We must remind people that gatherings like community litter picks should no longer be taking place until the government guidelines allow, and until our waste contractor is able to cope with the extra waste collection.

The waste team's well-tested service disruption plan is now in place.

Our waste contractor, Biffa, has suffered some staff shortages due to illness and self-isolation but is managing this by redeploying staff and using agency drivers.

However, with new crew members unfamiliar with the routes and in some cases fewer staff, it's likely that on occasions, crews might not be able to complete all of their daily rounds and so some bins might not be emptied on their usual collection day. We empty 200,000 bins every week and so even a moderate level of disruption to our usual staffing can cause delays.

- The advice for residents is as follows: if the bins in your street are not emptied, please leave them out for up to three days (including weekends) and we'll try to catch up. If still not emptied, bring them back in and we will empty them on the next planned collection day.
- We are working with Biffa to prioritise critical waste services. To help us with this plan we have suspended some non-essential services new garden waste subscriptions and investigating abandoned vehicles.
- We urge people to sort their waste carefully - food in food waste bins (you can put extra food waste in liners on top of your food waste bin), rubbish in black bins and clean, dry, loose recycling in their green recycling bins.
- We're also recommending residents wash their hands before and after taking the bins out to practice good hygiene for themselves and our bin crews.
- Please don't leave waste in black bin bags next to litter bins to be collected, it is illegal and this requires our teams to do extra collections and makes it harder to provide the residential and communal services the teams are continuing to do.

We will prioritise food, rubbish and clinical waste collections and some elements of street cleansing, including emptying litter bins.

### May 2020

Mon	Tue	Wed	Thu	Fri	Sat	Sun
				1	2	3
4	5	6	7	8	9	10
11	12	13	14	15	16	17
18	19	20	21	22	23	24
25	26	27	28	29	30	31

NB May Bank  
Holiday change

Grey Landfill

Green Recycling  
Brown Garden



## Badger Damage 2020

I write as a farmer who has lived and farmed in this village for more than 40 years

Most of the comment you will have read in the media is about the shocking effects on farms where Bovine Tuberculosis has infected their cattle. What does not make the news are other serious problems in areas where the countryside is overrun by the creatures

On Warborough Farm we no longer have any ground nesting birds, for example we have lost all our skylarks and plovers, five hedgehog skins were found outside a badger set. Damage to our permanent grassland full of wild flowers will have been seen by many people and looks not unlike a ploughed field

When legislation to protect badgers was introduced no thought was given to the likely long term consequences. Before badgers were protected, Tuberculosis had been



eliminated from our herds. Until they were protected we had a stable but minimal population of badgers and a natural balance of wild life in our countryside.

We learn that 85% of our population live in urban communities and a high proportion of them know nothing about our countryside. If they did I am sure Badger protection would be removed.



**Take the Lead**



## Walk on Warborough Farm

By the time this months issue of the Register is available, the fantastic display of Cowslips in Segsbury Castle and adjoining fields may have gone to seed. The areas of the farm adjoining the Ridgeway have been in the Countryside Stewardship program since 1992. This involved replacing arable crops with permanent grass, at the same time wild flower seed was sown. It has taken 30 years of careful management before the wild flowers became fully established. The Cowslips come first and are followed later in the summer by many other flowers. All of these are then mown for hay once the plants have set their seed.

The embankment around the Castle can be walked around if it is accessed from the stiles by the roadside New signs and plans have been put in place at all entrances to paths on the farm to show the permissive paths that have been created. These are much appreciated by many people now that there is currently a limit on public gatherings. All we ask is that walkers read the signs, keep to the paths and keep their dogs on leads.

## Accidental Deliveries

The Post Office are working as hard as possible under difficult circumstances.

Now more than ever we are all very grateful to our fantastic postie, Paul.

Sometimes, to help with the workload, we will have a substitute colleague.

Understandably they will not be as familiar with the vagaries of our village as Paul and mistakes get made in his absence.

If, under these conditions, you do get a Royal Mail delivery not intended for you and are shielding, you can still mark it as not for your address and leave it out to be collected and re-delivered. (Not applicable to misdirected Courier packages).





## Brain teasers

**Around the World in 80 songs** - answers next month with more to come  
(with thanks to Val Clure for this and the Film Title quiz below)



1. Do you know the way to -----
2. ----- Dreaming
3. ----- on my Mind
4. Y Viva -----
5. By the Beautiful Blue -----
6. My Old -----
7. Tulips from -----
8. -----Swings
9. Hotel -----
10. ----- (And did those feet)
11. Oh I am going back to -----
12. The ----- Waltz
13. From ----- with Love
14. Stars Fell on -----
15. The ----- Boat Song
16. Rule -----
17. ----- (That Toddling Town)
18. In a Windmill in Old -----
19. The ----- Maid
20. I Left My Heart In -----



### Guess the Film Title

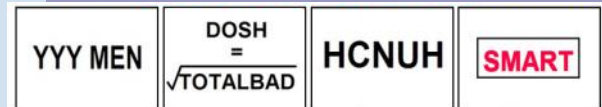
1. Went away because of flatulence
2. Amusement park girlfriend
3. There is a twist to this tale
4. An Australian 'magician'
5. Take a vacation but not out
6. They call it 'white house' in Spanish
7. Challenge for these birds of prey
8. Keep going, but use the tent
9. Not white or ugly
10. Dense Forest in this novel

### Answers

1. **Gone with the wind**
2. **My Fair Lady**
3. **Oliver Twist**
4. **Wizard of OZ**
5. **Holiday Inn**
6. **Casablanca**
7. **Where Eagles Dare**
8. **Carry On Camping**
9. **Black Beauty**
10. **Jungle Book**

### Dingbats (Answers below)

- 1.
- 2.
- 3.
- 4.



1. 3 wise men
2. Money is the root of all evil
3. Hunch back
4. Box clever

### What links these former US presidents with these locations?

1. Abraham Lincoln - Albany, New York
2. Rutherford Hayes - Florence, Kentucky
3. Grover Cleveland - Milford, Pennsylvania
4. Franklin Roosevelt - Waco, Georgia
5. Lyndon Johnson - Bath, North Carolina
6. Jimmy Carter - Great Neck, New York.

Answers next month

(with thanks to Iain McCoubrey)



## More Brainteasers

### Quiz - Murder Most Foul

#### Famous Detective Series and Sleuths

e.g. 'Agricultural Honey' - Barn a By (Bee) - 'Barnaby' - Midsummer Murders

- |                                 |   |
|---------------------------------|---|
| 1. Not so tough princes son     | 14. Alphabet vehicles                     |
| 2. Mariner joins Rambo          | 15. Seen but no heard                     |
| 3. Religious Public Transport   | 16. Perhaps its not dark enough           |
| 4. Its cold outside             | 17. Lifeless before Christmas Day         |
| 5. Join the dots                | 18. Berlin barrier and queen, initially   |
| 6. An island escape             | 19. Capital bookshop in conflict          |
| 7. Dishonourable Rasp           | 20. Lolly sucker!!                        |
| 8. Four letters in a Landie     | 21. Her Security living space             |
| 9. Short queen fall in a strop  | 22. Chef floats his boat to the new World |
| 10. Plain Poet                  | 23. Game of design                        |
| 11. Richards son medical colour | 24. Give longer treasure box              |
| 12. Milky way and rabbit abode  | 25. Island number letter                  |
| 13. Over the river Kwai?        |   |



(With thanks to Jeanne Lapsley for both these Brainteasers - answers next month)

### Mind Tester - Collective Nouns which group of animals/birds is known as a:

- |                    |                 |
|--------------------|-----------------|
| 1. Crash           | 11. Bloat       |
| 2. Shrewdness      | 12. Shadow      |
| 3. Gang/Obstinacy  | 13. Conspiracy  |
| 4. Clowder/Glaring | 14. Family      |
| 5. Bask            | 15. Team/Yoke   |
| 6. Murder          | 16. Pandemonium |
| 7. Drove           | 17. Shiver      |
| 8. Convocation     | 18. Stench      |
| 9. Stand           | 19. Zeal        |
| 10. Tower          | 20. Knot        |

**Six stations on the London Tube map have been (sort of!) translated into French. Can you work out which they are?**

Question	Answer
1. Chalet	1. Swiss Cottage
2. Eau de Toilette	2. Waterloo
3. Jalousie	3. Turnham Green
4. Kilometre	4. Mile End
5. Poulet	5. Hatch End
6. Fou	6. Barking



(answers to last months Brainteaser  
With thanks to Iain McCoubrey)

## Follow up to the Letcombe Lions

With thanks to Reg Pike of Letcombe Bassett.

Reg is the oldest continuous resident of the Letcombes. His memories of life over the past (nearly) 100 years have entertained and sustained many of us who are privileged to have met and talked to him and Margaret. When Reg was given a copy of the April Register by his son Bob, he was spurred into action and produced this photo from his album.



Neil McLaurin interviewed Reg a while ago, when he put together a presentation on the History of Letcombe Regis. He has also contributed this photo from that presentation.

Mrs Silver and her lion at Warborough Farm in 1935



## Saint of the Month - Julian of Norwich



“All shall be well, and all shall be well and all manner of thing shall be well.”

Rarely have such comforting words been more welcome. They are attributed to Julian of Norwich and appear in her book *Revelations of Divine Love*. But if you actually read her writing, you realise that these are not

her own words but that she is quoting what she claims God to have spoken to her.

In 1373, the city of Norwich was suffering the devastating effects of the Black Death and repeated waves of plague were decimating an already depleted population. Julian was living as an anchoress – a woman who has set herself apart for God and lives in a tiny cell, usually attached to a church or a religious order. On May 8<sup>th</sup> Julian, then aged 30, became so ill that a priest was summoned to administer the last rites to her. As he held up a cross at the foot of her bed, Julian had a vision of God in which he spoke to her. On May 13<sup>th</sup>, she had recovered sufficiently to resume her isolated life of study and prayer and she began to write the text for which she was to become famous. *Revelations of Divine Love* is the oldest surviving text written in English by a woman.

The fact that she's called Julian causes problems. She lived

pretty much all her life in isolation in a cell attached to St Julian's church, Norwich, so it may have been that she was “a Julian”, a member of that community. On the other hand, “Julian” was used as a girl's name in the Middle Ages, the form “Juliana” is a relatively modern construct. She isn't actually a saint at all, never having been canonised, but she is commemorated with a feast day on either May 8<sup>th</sup>, the day of her first vision, or May 13<sup>th</sup>, the day she was well enough to begin writing. She is sometimes referred to as Mother Julian or Dame Julian. Whatever her actual name and whatever her status as a saint or not, she is revered as Julian of Norwich and her words are treasured.

Those of you who are patrons of the Wantage Literary Festival may remember the art historian Janina Ramirez's talk to the festival, following the publication of her biography of Julian of Norwich in 2016. Janina was recently interviewed by the BBC and highlighted the obvious relevance to our times: for Black Death read Coronavirus. “Julian was living at a time of repeated plagues and I think she was self-isolating. The other anchorites would have understood that by removing themselves from life this would not only give them a chance of preserving their own life but also of finding calm and quiet and focus in a chaotic world.”

*All shall be well, and all shall be well and all manner of things shall be well.”*



## Covid Crafting

### From Emma Matthews -

My father is in a temporary respite bed in a nursing home. To keep him in contact with life at home, I posted some photos of spring in our garden a few weeks ago. David Hockney has been inspired by nature at this time and has shared this with the wider public.



Maybe, children and young people in the village might like to draw, paint, make a collage of Spring at Home - bluebells in bloom, trees coming into leaf, apple blossom, new shoots, birds and other animals, pets basking in the sun perhaps.

Art can also be made from natural materials such as twigs, stones, petals etc.

Photos of the child's artwork could then be emailed to share with residents.

I have nature and  
art and poetry,  
and if that is not enough,  
what is enough?  
Vincent van Gogh

### From the Photographic Club -

#### Photography invitation.



The Letcombe Photographic Club would like to invite Letcombe photographers to submit images for display in Register. Of those submitted, the club will select a small number to be published each month. The deadline for submission is the 20th of each month and the subject for June's edition is 'The Lockdown – a personal view'.

Please send your images (max 2 per resident) as an attachment to [stevemikarics@gmail.com](mailto:stevemikarics@gmail.com)

Please use ONE of the following formats for your image - Bitmap (.bmp), JPEG (.jpg, .jpeg), PNG (.png) or your own camera's format.

Happy snapping.

### From Ann Batchelor -



As our social distancing is proving more tricky than first imagined – fear not! There are loads of easy crafts and ideas that will help while away the hours and leave you feeling positive. Decoupage items that you already have in your home, for example vases, boxes, trays, bowls or mirrors. Decoupage involves cutting out pictures, gluing them to an object and then coating the pictures and the object with layers of varnish. The process can be broken down into the following steps:

1. Cut out pictures from wrapping paper, wallpaper, magazines or catalogues, greeting cards, fabric and/or paper napkins.
2. Arrange the pictures before gluing using PVA glue.
3. Smooth out any wrinkles and wipe away excess glue.
4. Let it dry.
5. Spray with clear varnish (if you don't have this apply another layer of PVA).
6. Again, Let it dry.



The example shown used a glass vase, the design using tissue paper and napkins.

### Gardening Club - Topical Tips



Well we're in the fourth week of lock down while I'm writing this and it is definitely going to continue into May so this gives us a chance to continue the good work we started in April and get our gardens looking their best.

You should be able to plant out your dahlias and cannas towards the end of the month but do check the weather forecast first. With the lovely weather we're having at the moment it is hugely tempting to start doing this and dragging out those pots of tender perennials earlier but there is always a chance of a late frost.

Some of those perennials that have been flowering their socks off in spring will be looking a little tatty now. Examples are pulmonarias and aubretia. If you give them a haircut they should reward you with fresh new growth and all I can say is lucky them. We could all probably do with that!

If you have some time on your hands then you could try taking cuttings of some tender perennials like fuschias and pelargoniums. New plants for free as they say.

Now is the time to start pruning spring flowering shrubs but do be careful and check for bird nests first. It is actually an offence to damage or destroy them. Chaenomeles (flowering quince) is a really good one to have a go at as if you work hard at shortening the side shoots you will get loads more flowers next season. I'm sure you're all regularly tying in your climbing plants and roses to prevent them turning into a wild mess! Remember to tie your roses in as near to horizontal as possible as this will encourage more flowers.

This is easier when the growth is new and pliable.

If you have a greenhouse then be aware that on sunny days the temperature inside can rise pretty rapidly to rival that of a desert so give your plants a break, (after all you wouldn't want to be subjected to this for any length of time) and open the doors, windows and vents. If you have problems with red spider mite then spraying the floor with water to increase the humidity really helps.

Now we turn to fruit and veg as I know that a lot more people are 'having a go' this year because they have time on their hands. There are two main jobs on the veg plot in May; hoeing weeds and thinning out crops. Thinning applies to most direct sown crops.

There are many crops you can direct sow this month. I won't make a list so just look at the seed packets, but if you are direct sowing and it is dry then water in the drill first before sowing and then water again once you have sown. This will help germination.

Sweetcorn, squash and courgette can be sown in pots under cover this month. Don't be tempted to do this too early as if they do germinate they grow 'like the clappers' and you can't plant them out if it's too cold, as they will then languish.

As far as fruit care is concerned, this month the battle lines are drawn! Pretty much your only task is to prevent the birds getting at your crop before you. Whether you put up netting or decide to sit there and shout I wish you the best of luck!

Well I think I've rambled on long enough now so get out there, take your mind off the strange times and enjoy!

### Friends of Letcombe Valley Community Nature Reserve

Residents and visitors continue to enjoy the Reserve where cowslips and bluebells have re-established themselves after ten years of volunteer work and management for the community and wildlife. Look carefully in the newly created pond to see the shallow edges colonised by tadpoles during April and in the slightly deeper, muddy waters lurk the larvae of newts now with their front legs already developed and feathery external gills behind their heads. These are probably Smooth or Common newts which are widespread throughout the UK and often found in garden ponds. Both males and females are brown in colour and have black spots that extend up the throat from their orange bellies. The frog tadpoles will be a favourite food in addition to water invertebrates, such as water boatmen, but nature balances the numbers well. Once the back legs are developed on the newt larvae, their gills will be absorbed and the adults and juveniles will leave the

pond and feed on land invertebrates. In the summer the newts will find shelter in damp soil and beneath logs. The Reserve contains a myriad of wildlife in an interconnected web, but the best of this wildlife will be observed and/or heard only by being still and quiet for a length of time. This characteristic differentiates all BBOWT's nature reserves from recreation grounds, the latter being the ideal places for exercise by humans and their four-legged friends. Both provide enjoyment but in very different ways. Hopefully the quiet and stillness of the Letcombe Valley Community Reserve will be maintained for wildlife refreshing humans through and beyond the current 'lockdown' period.



### St Andrew's Notes

Due to Lockdown, St Andrew's, sadly, has to remain closed. However, there are notices on the front door, or just inside the Porch in windy weather, providing details of support available for all to access. The porch is also home to the village Book Swap which has been publicised in our COBRA team's Covid bulletins: there's a large box of books on loan to read and contribute to. Using sensible sanitising measures, you are invited to dive in - thrillers, romances, biographies galore. Enjoy!

It was particularly sad not to have our doors open wide with services for Mothering Sunday and over Easter. However, Mothering Sunday just pipped in before the full Lockdown and a beautiful celebratory reflection was on display in the Church.

Easter, however, was another matter, but Easter reflections were posted inside the Porch on the door, as well as a 'Garden on a Plate' placed at the entrance to the churchyard reminding us of Jesus' resurrection from the tomb.

On Easter Sunday the porch doors were opened wide to display a beautiful vase of flowers, which remained there for the week, with colourful posters on the gate.



St Andrew's Church  
Lit for Carers  
(With thanks to Mike Price)

*On behalf of the Trustees, I hope you and your families are staying safe during the ongoing situation. The Village Hall and Children's Play Area remain closed, and like everyone else, we will take the advice of the Government on when we will be able to reopen.*

*Our regular bookings have been cancelled for 5 weeks now, and there have been a number of cancellations or postponements of hirings, as we now come into what is normally our busier period for events such as wedding receptions.*

*As mentioned last month, the Village Hall and Recreation ground A.G.M. will be postponed until we are able to hold it safely, but annual reports and accounts will appear in next months Register.*

Although the church building remains closed, worship continues. The Sunday morning service of Holy Communion, conducted via Zoom, allows us to join together. If you would like to join, or would like further details, do get in touch with Leonora: [revd.lahill@btinternet.com](mailto:revd.lahill@btinternet.com) or Andrea: [revd.acolbrook@gmail.com](mailto:revd.acolbrook@gmail.com)  
As CS Lewis said, "We need to know we are not alone."

May 11<sup>th</sup> – 16<sup>th</sup> is Christian Aid Week. Susan Eden has organised the collection round the village in previous years and she writes, " This year, after floods and droughts and wildfires round the world, but particularly in those parts least equipped to cope, our help is needed more than ever – and now there is the pandemic on top of all that ! There can be no round-the-village collection during Lockdown, and we can't leave a box for donations in the church, but we would urge you to go online and donate what you can. Visit [christianaid.org.uk](http://christianaid.org.uk) to find out more. " With so many charities making urgent requests for funding, Christian Aid might not be top of your charitable list but they say: "You've already shown incredible kindness to your neighbours. Now is the time to reach out to your neighbours both near and far."

To celebrate our wonderful NHS workers, all carers and those serving us on the frontline, a blue light shines out from 8-10pm every evening, visible in the Altar window. On Thursday evening all the lights are switched on to coincide with the nation's applause at 8pm. In Holman Hunt's painting "The Light of the World" Christ stands with a lantern at a long -unopened door; let us hope that our church doors will soon be flung open once more.

### Letcombe Regis Village Hall and Recreation Ground Trust



*The Hall is checked regularly to make sure there aren't any issues, and those of you who use the Recreation Ground for exercise will see that the Football, Cricket and Riding Clubs continue to keep the grass cut for when they are able to start their use again, even though we do not know when this will be.*

*The area immediately around the Hall will have some tidying up and gardening done, and this may well happen before you get to read this.*

*Take Care  
Richard Taylor  
Chairman,  
Letcombe Regis Village Hall and Recreation Ground Trust*



## Tennis Club



### Wimbledon 2020 Cancelled

The All England Lawn Tennis Club has announced the decision to cancel The Championships Wimbledon, 2020, due to the outbreak of COVID-19. We are extremely sorry that our members who have been allocated tickets for this year, will not be able to attend SW19 this summer. However, we trust you will understand why this important decision to cancel the event was made.

All ticketholders will shortly receive a refund for the full face value of the tickets.

### Courts

As you are all aware the courts are CLOSED until further notice and all events and coaching activities have been postponed or cancelled.

We know tennis players are passionate about the sport and may feel there could be a way they could play safely, i.e. by using own equipment and only allowing single family groups to play at one time. We therefore are confident that Tennis will be one of the first sports to be allowed to soon restart.

Some members have reported that Childrey's *Tennis Hitting wall*, in the bottom corner of their recreation ground, is currently being very well used, but as our *Hitting Wall* is within the courts, at present it remains unavailable, sorry.

### Membership Fees

Our online payment systems have now been upgraded so that we can now do bulk start date and or membership fee, changes, This means that once we are clear to reopen the courts we can adjust the fees prorate to the weeks lost.

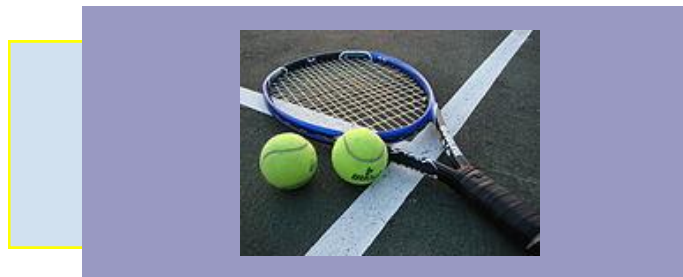
For those members that have paid this year's joining fee (thanks you very much) we will reduce next year's fees prorate.

In support of this lost revenue the LTA are waiving our affiliation fees (£220) for this year (every bit, helps)!

We will be in touch again once we have more information.

### Tennis at Home

To help everyone continue to stay active, the LTA have produced a series of videos as to how to enjoy tennis at home - check out their dedicated '[Tennis at Home](#)' webpage, and follow LTA social media channels to get more [Tennis@Home](#) content!



<h3>Gabi's Cleaning Service</h3> <p>If you need help to keep Your house tidy please don't hesitate to ring Gabi References are available</p>  <p><b>Cleaning Ironing Carpet Cleaning</b></p> <p><b>07771391209/ 07917192554</b> Whatsapp/ <a href="mailto:Gabipapp@icloud.com">Gabipapp@icloud.com</a> Viber/ Messenger</p>	<h2>MILLBROOK SERVICES</h2> <p>EST. SINCE 1994 <b>PROFESSIONAL CARPET CLEANING &amp; WINDOW CLEANING</b> FULLY INSURED</p> <p><i>millbrookservices1@gmail.com</i> <b>TEL: 01235 511541 MOB: 078144 28395</b> DIDCOT, OXFORDSHIRE Visit our webpage to view all our services <a href="http://www.millbrookcleaning.co.uk">www.millbrookcleaning.co.uk</a></p>
--	--

Upcoming Road Closures - 27/7



**OXFORDSHIRE COUNTY COUNCIL**

**TRAFFIC REGULATION NOTICE**  
ROAD TRAFFIC REGULATION ACT, 1984

Notice is hereby given pursuant to Section 14(2) of the Road Traffic Regulation Act, 1984, that the Oxfordshire County Council

TEMPORARILY PROHIBITS WAITING ON THE HIGHWAY BY ALL MOTOR VEHICLES

**LOCATION:** Letcombe Regis, Unnamed Road (between Bassett Road and Main Street)

**REASON:** To facilitate carriageway patching works

**DURATION:** On 27 July 2020  
This is a 24 hour road closure.  
(Traffic Regulation Notices cover a maximum of 5 consecutive days.)

**ACCESS:** Limited access will be maintained for emergency service vehicles and for frontages subject to the progress of the works

The "No Waiting" restriction means that wherever there are in place yellow "No Waiting" cones, you will not be able to park vehicles on the highway.

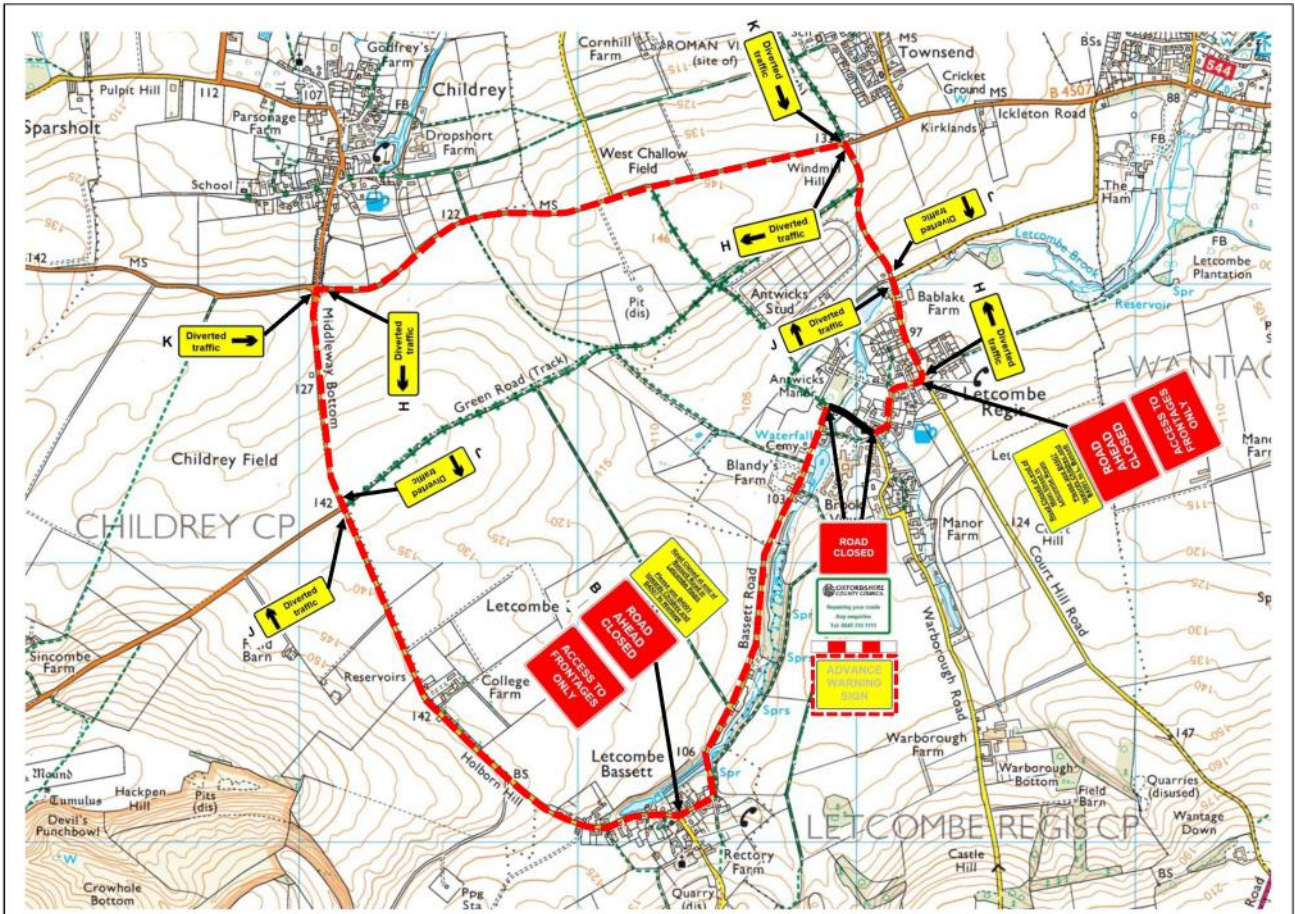
**SUGGESTED ALTERNATIVE ROUTE:** via Main Street, Ct Hill Road, B4507, B4001, Holborn Hill, Bassett Road and vice versa

*Jason Russell*

Jason Russell, Director for Infrastructure Delivery Communities

Date: 20 April 2020

A		2	T		2
B		2			
C			U		1
D					
E			V		1
H		2			
J		4			
K		2	W		
R		2			
S		2			
W					
X					
Y		2			





## Upcoming Road Closures - 28/7



**OXFORDSHIRE COUNTY COUNCIL**

**TRAFFIC REGULATION NOTICE**  
ROAD TRAFFIC REGULATION ACT, 1984

Notice is hereby given pursuant to Section 14(2) of the Road Traffic Regulation Act, 1984, that the Oxfordshire County Council

TEMPORARILY PROHIBITS WAITING ON THE HIGHWAY BY ALL MOTOR VEHICLES

**LOCATION:** Letcombe Regis, Main Street  
**REASON:** To facilitate carriageway patching works  
**DURATION:** Starting on 28 July 2020  
 The anticipated completion date is 30 July 2020(date included). This is a 24 hour road closure.  
 (Traffic Regulation Notices cover a maximum of 5 consecutive days.)  
**ACCESS:** Limited access will be maintained for emergency service vehicles and for frontages subject to the progress of the works

The "No Waiting" restriction means that wherever there are in place yellow "No Waiting" cones, you will not be able to park vehicles on the highway.

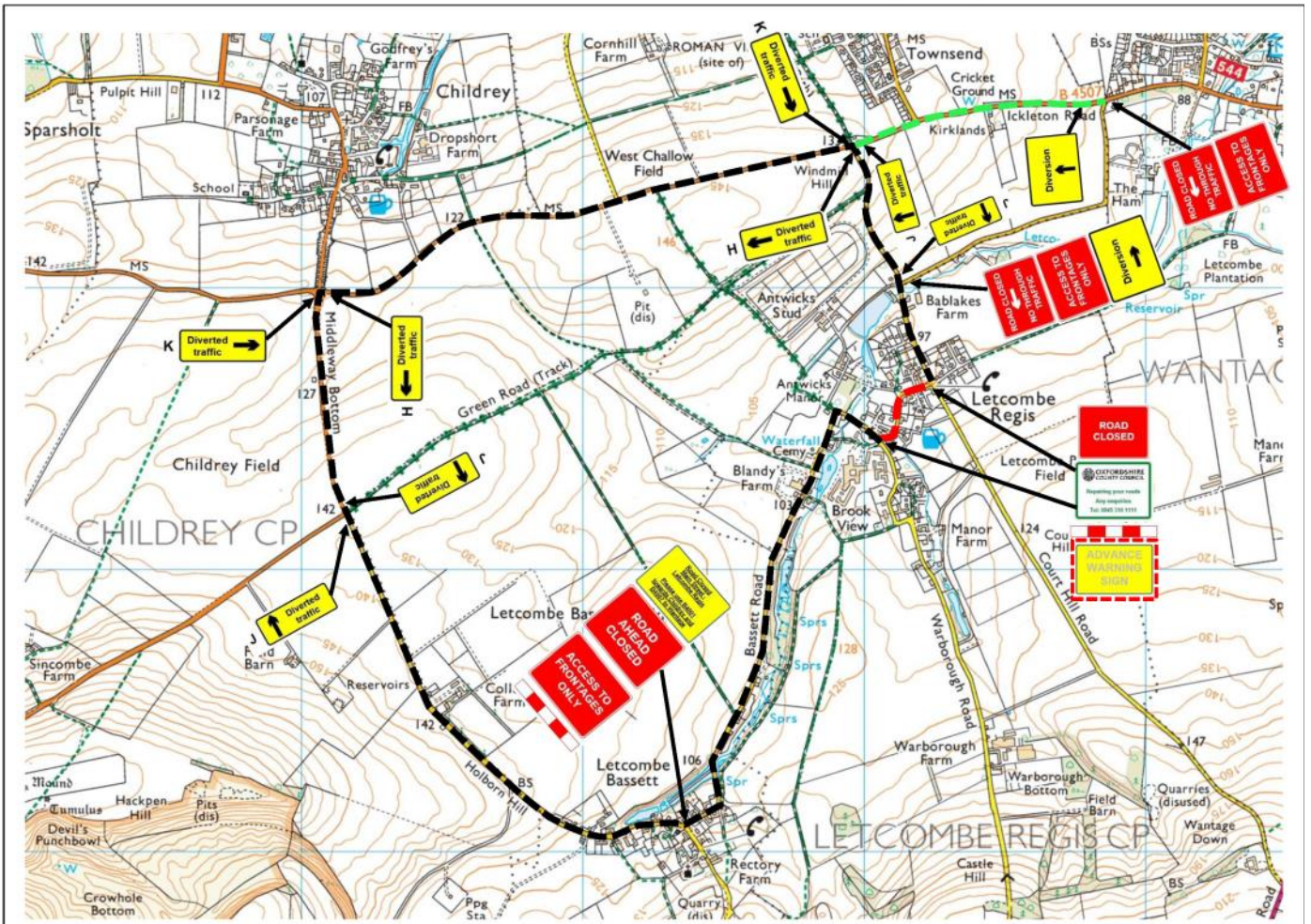
**SUGGESTED ALTERNATIVE ROUTE:** via Ct Hill Road, B4507, B4001, Holborn Hill, Bassett Road, South Street and vice versa

*Jason Russell*

Jason Russell, Director for Infrastructure Delivery Communities

Date: 20 April 2020

<b>A</b>		2	<b>T</b>		2
<b>B</b>		1	<b>U</b>		1
<b>C</b>			<b>V</b>		
<b>D</b>		1	<b>W</b>		
<b>E</b>		1	<b>X</b>		2
<b>H</b>		2	<b>Y</b>		3
<b>J</b>		4	<b>S</b>		2
<b>K</b>		2	<b>W</b>		
<b>R</b>		3			





Upcoming Road Closures - 31/7



**OXFORDSHIRE COUNTY COUNCIL**

**TRAFFIC REGULATION NOTICE**  
ROAD TRAFFIC REGULATION ACT, 1984

Notice is hereby given pursuant to Section 14(2) of the Road Traffic Regulation Act, 1984, that the Oxfordshire County Council

TEMPORARILY PROHIBITS WAITING ON THE HIGHWAY BY ALL MOTOR VEHICLES

**LOCATION:** Letcombe Regis, Court Hill Road  
**REASON:** To facilitate carriageway patching works  
**DURATION:** Starting on 31 July 2020  
The anticipated completion date is 04 August 2020 (date included). This is a 24 hour road closure (Traffic Regulation Notices cover a maximum of 5 consecutive days.)  
**ACCESS:** Limited access will be maintained for emergency service vehicles and for frontages subject to the progress of the works

The "No Waiting" restriction means that wherever there are in place yellow "No Waiting" cones, you will not be able to park vehicles on the highway.

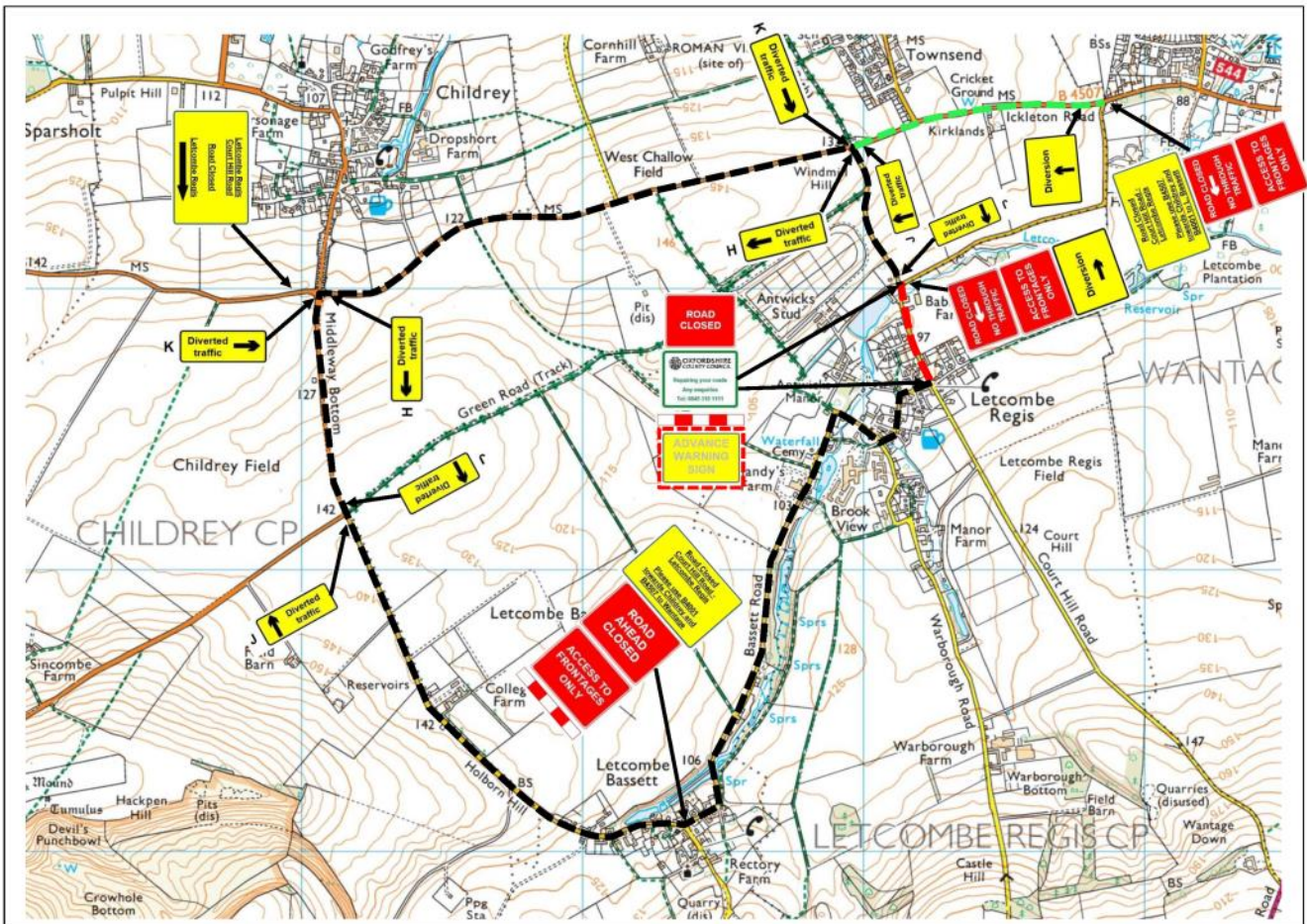
**SUGGESTED ALTERNATIVE ROUTE:** via Court Hill Road, B4507, B4001, Holborn Hill, Bassett Road, Main Street and vice versa.

*Jason Russell*

Jason Russell, Director for Infrastructure Delivery Communities

# Date: 21 April 2020

A	ROAD CLOSED	2	T	ADVANCE WARNING SIGN	2
B	ROAD AHEAD CLOSED	1			
C	Diversion ←		U	Road Closed Court Hill Road - Letcombe Regis Please use B4001 towards Childrey and B4507 to Wantage	1
D	Diversion →	1			
E	Diversion ↑	1	V	Road Closed Court Hill Road - Letcombe Regis Please use B4507 towards Childrey and B4001 to L. Bassett	1
H	← Diverted traffic	2			
J	↑ Diverted traffic	4			
K	→ Diverted traffic	2	W	Letcombe Regis Court Hill Road Road Closed Letcombe Regis	1
R	Red and white striped sign	3			
S	OXFORDSHIRE COUNTY COUNCIL Repairing your roads Any enquiries Tel: 0845 319 1111	2			
W	ROAD CLOSED NO THROUGH TRAFFIC			Letcombe Regis Court Hill Road Carriageway Repairs	
X	ROAD CLOSED NO THROUGH TRAFFIC	2			
Y	ACCESS TO FRONTAGES ONLY	3			



Francesca Engelmann,  
2, The Old Stables,  
Letcombe Regis,

[Register@Oldstableyard.co.uk](mailto:Register@Oldstableyard.co.uk)

01235 769310

*The views expressed in the Register do not necessarily reflect the view of  
Letcombe Regis Parish Council*

*Deadline for inclusion is the 27th of each month.*

## Village Hall closure (taken from the Village Hall email)

**Due to the current situation with the  
Coronavirus we are currently closed  
for at least 2 months - April & May.**



We will be guided by Government Guidelines as to when we can re-open but we are unable to give a date at this present time.

We have kept all bookings in place for the time being, but feel free to email me with any queries. The office is being manned, as usual on a part-time basis only, and we will respond at the earliest opportunity, but this may take a day or two.

If you are emailing about Hall Availability, then please check the Hall Calendar here - <https://www.letcomberegishall.org/availability>, which should allow you to see when the Hall is busy/free.

Alternatively, you can call the Hall mobile phone on 07434 405074, but mobile phone signal in Letcombe isn't always reliable.

